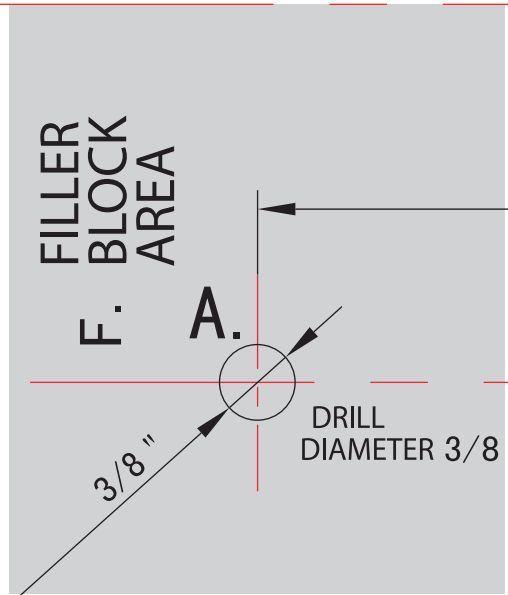


LEFT SIDE



NOTE: IT IS VERY IMPORTANT TO READ AND FOLLOW THE DIRECTIONS IN THE INSTALLATION INSTRUCTIONS BEFORE PROCEEDING WITH THIS TOP CABINET TEMPLATE.

This template is used to locate the power cord clearance hole, cabinet mounting holes and the vertical exhaust cutout.

1. Determine if your cabinet has a recessed area or a smooth, flat bottom. See Fig. 1. If smooth, tape template onto the bottom surface (Fig. 2). If it is recessed, cut the edges of the template to fit in the recessed bottom of the cabinet. It is important that the edges of the cabinets permit level installation of the oven.

NOTE: On some cabinets a small bracket or glue block is used between the overhang and the underside of the cabinet bottom. Cut the template to fit around the bracket or glue block so that template will lie flat against the bottom of the cabinet.

Tape the Top Cabinet Template to the underside of the top cabinet in the recessed area. Fig. 3.

NOTE: Make sure the rear of the template touches the back wall (for smooth, flat bottom cabinets) or the back of the recess (for recessed bottom cabinets) after cutting the edges of the template.

2. Drill 3/8 "diameter holes at A., B. & C.
CAUTION: Wear safety goggles when drilling holes in the cabinet bottom.

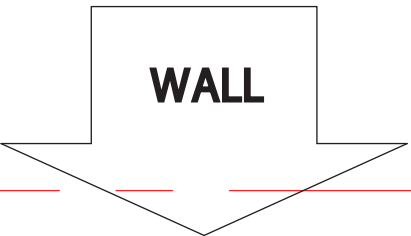
3. Cut out the 2 " diameter hole at D . for power cord. If cabinets are metal, use the nylon grommet (see the Parts Included section in the Installation Instructions) to surround the opening to protect the cord.

4. (FOR VERTICAL EXHAUST ONLY)
Cut out shaded area E. through the cabinet bottom for Vertical (Outside) Exhaust location.

5. Remove the top cabinet template.

6. For recessed cabinets, make 2 filler blocks out of scrap wood the size of the shaded areas F. & G. These filler blocks must have a thickness equal to the depth of the cabinet recess. Drill 1/2 " diameter holes in these blocks to line up with A. & C. . Place the blocks so that the holes in each block line up with the corresponding holes in the cabinet. The filler blocks should be at the same level as the bottom edge of the wall cabinet frame. Fig. 4.

7. RETURN TO AND PROCEED WITH THE INSTALLATION INSTRUCTIONS.



13-3/8 "

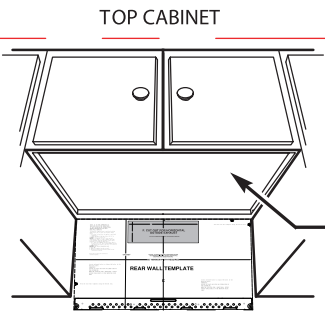


FIG. 1

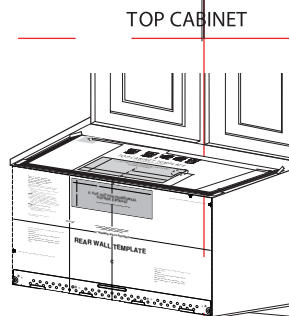
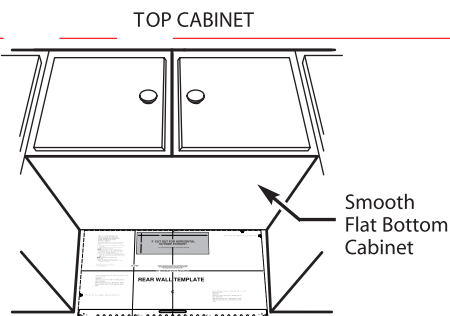


FIG. 2

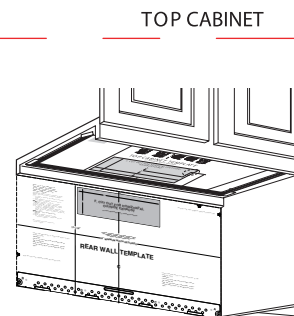


FIG. 3

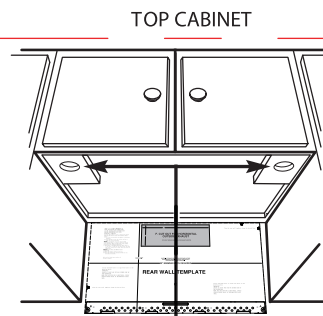
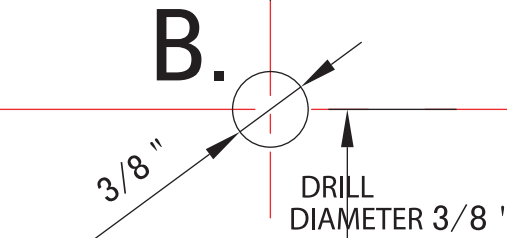


FIG. 4

8-1/4 "

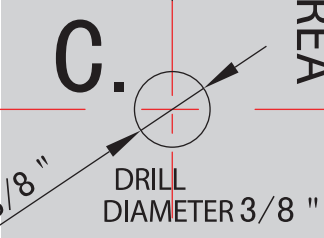
13-3/8 "



B.

DRILL DIAMETER 3/8 "

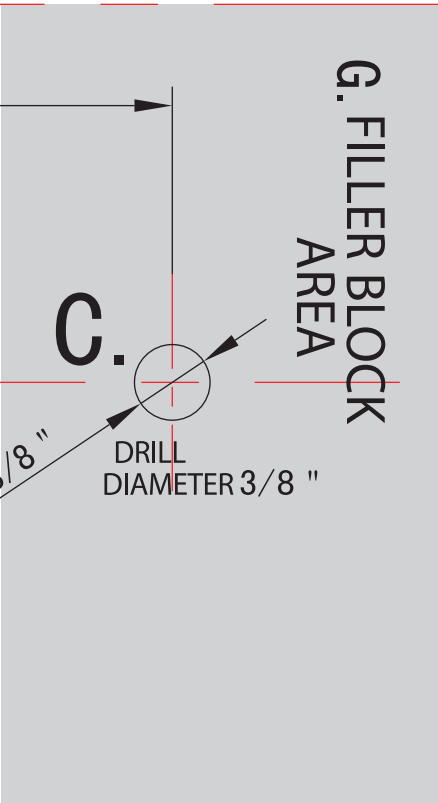
9-27/32 "



C.

DRILL DIAMETER 3/8 "

RIGHT SIDE



TOP CABINET TEMPLATE

E.CUT OUT FOR VERTICAL (OUTSIDE) EXHAUST ONLY

CUT HOLE THROUGH CABINET BOTTOM FOR EXHAUST ADAPTOR

D. POWER CORD

2 "

DRILL DIAMETER 2 "

4-1/4 "

6-1/4 "

12-1/2 "

4-1/2 "

WALL

WALL