

# **12,000 BTU/18,000 BTU Ductless Mini Split Air Conditioner with Heat Pump**



## **INSTRUCTION MANUAL**

**Wi-Fi Feature is only available for Wi-Fi enabled model**

# 1. Instruction

Smart air conditioner is an air conditioner with Wi-Fi remote control system. It could be controlled by your smartphone with 2.4G Wi-Fi, 2G, 3G ,4G network.

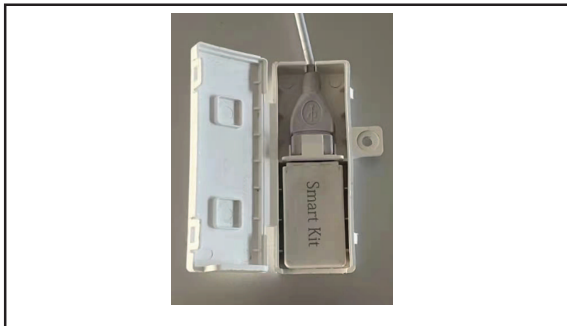
1.1 Power off the air conditioner, Open the air conditioner panel as shown in the figure.



1.2 Unscrew WiFi box screws.



1.3 Insert WiFi module as shown in the figure (The “Smart kit” is marked face up)



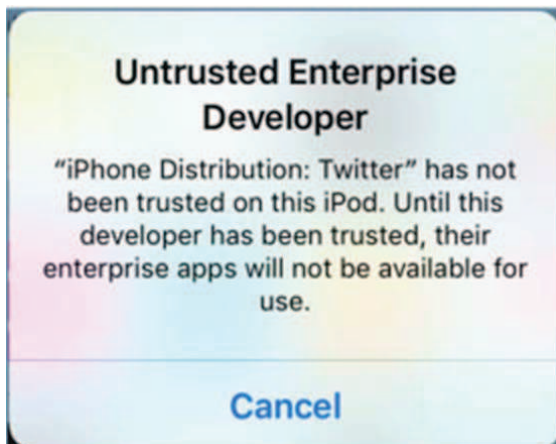
## 2. App download link

Address : <http://e.tuya.com/smartlife>



Scan the QR code to download Smart App

Note: After the initial installation of iOS version, may be prompted to remind, as shown below. Go to Phone Settings - General – Profiles & Device Management, tap on “Hangzhou Miaoyong Technology...”-“Verify Apps”, and select “Verify”. Then open App again

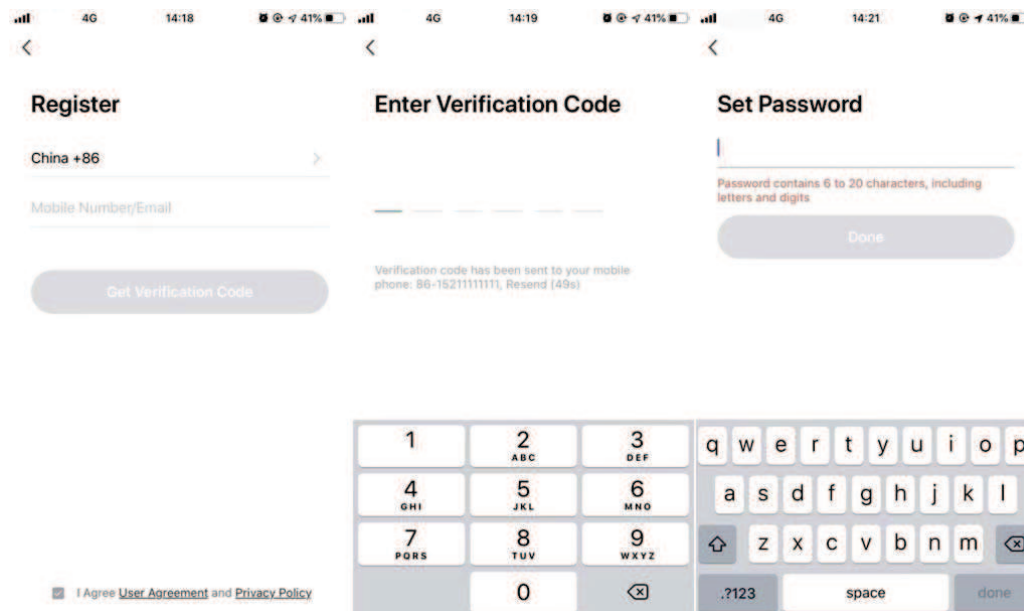


## 3. Operation instruction

### 3.1. Register account:

When you open the App for the first time, start your registration. Tap on "Register" at upper right corner of the login page, Type in your Email address or mobile number,

tap on “Next” and receive a verification code. Type in the code and confirm your password, and then tap on “Confirm”. After successful verification, registration process is finished and App goes to the home page.



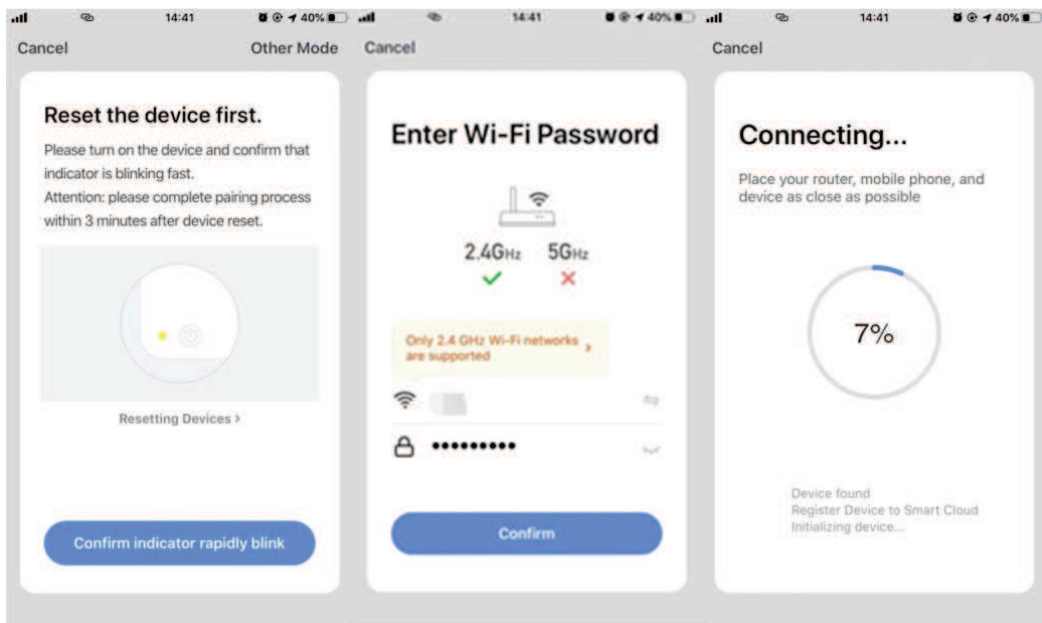
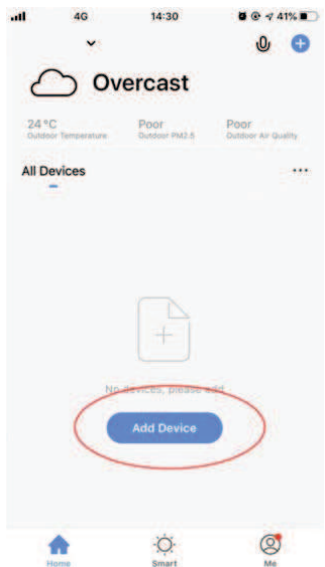
## 3.2. How to add device?

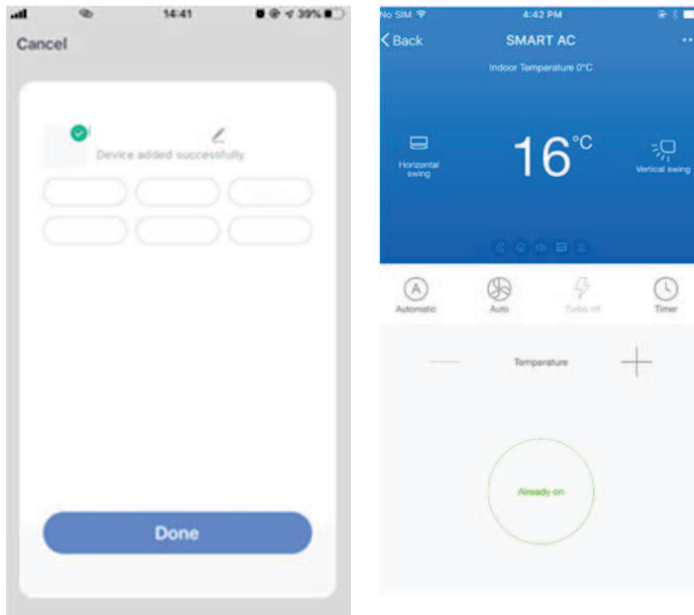
3.2.1 Please make sure that the device is on the pending status awaiting to be connected. If not, please reset the device via the following procedures: Long press the reset-button for 5s— buzzer sounds— the WIFI icon on device is quickly flashing (approx. 3 times/s). Then it indicates that the device is successfully reset and has entered into Smart mode.

3.2.2 Open the App, tap on **【Add device】** , select your own Wi-Fi network, type in your own Wi-Fi router password and tap on “ Next” . Then the network configuration starts.

3.2.3 When configuration is successful, you could see the app interface as shown in the screenshot below.

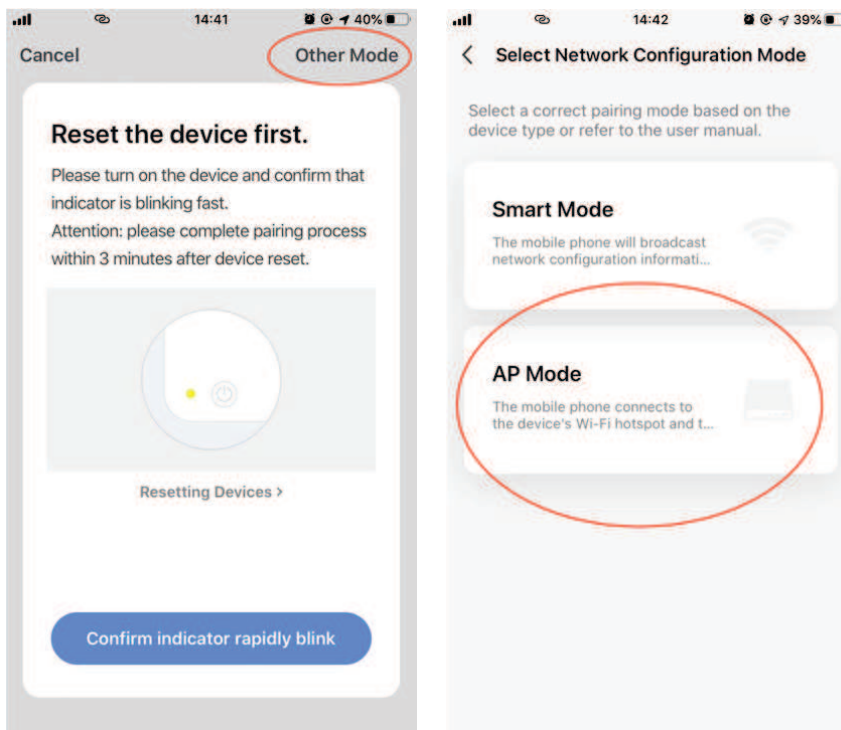
3.2.4 Tap on **【Done】** , you could see the interface of a device list as shown in the screenshot below.





### 3.3. What if connection failed?

When the connection failed, you could see the the App interface as shown in the screenshot below. Please try to configure network again or switch to AP mode.



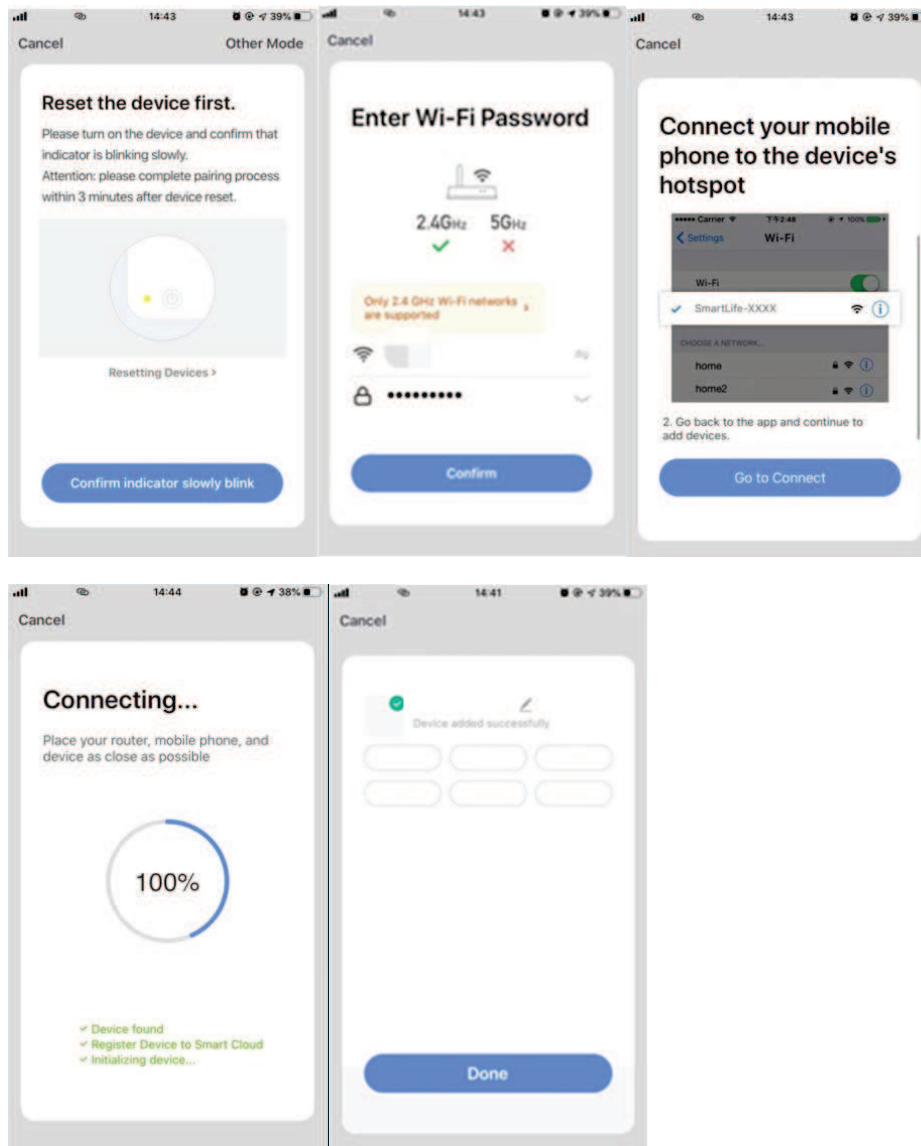
3.3.1. Continue to connect by switching other connection mode.

1. Tap on【AP mode】, configure network via AP mode with the following procedures.
2. Switch Air conditioner to AP mode: When it is under smart mode, long press reset-button for 5 seconds-buzzer sounds—the heating icon on device is slowly

flashing (approx. 1.5 times/s). It indicates the Air conditioner has entered into AP mode

3. Connect to device hotspot: Tap on **【Connect】** (open phone settings-WLAN), connect to the hotspot named “SmartLife-XXXX” (The name of WIFI may vary, depending on the actual product), then the network configuration starts as shown in the screenshot.

4. After successful network configuration, tap on “Done” and the device list interface appears.



### 3.3.2. Add device again from device list

1. Open App, tap on **【AP mode】** at upper right corner, connect to device via AP mode with the following procedures.

2. Select your own Wi-Fi network, type in your Wi-Fi router password, and tap on “Next”

3. Switch Air conditioner to AP mode: When it is under smart mode, long press

reset-button for 5 seconds-buzzer sounds— device’s indicator light is slowly flashing (approx. 1.5 times/s). It indicates the Air conditioner has entered into AP mode

4. Connect to device’s hotspot: Tap **【 Connect】** (open phone settings-WLAN), connect to the hotspot named “SmartLife-XXXX” (The name of WIFI may vary, depending on the actual product), then the network configuration starts as shown in the screenshot.

5. After successful network configuration, tap on “Done” and the device list interface appears.

### 3.4. Device control

3.4.1 Select the device and enter the main control interface as shown in the screenshot below.

3.4.2 Tap on **【Switch】** to turn on/off Air conditioner

3.4.3 Tap on **【Mode】** to switch the working mode

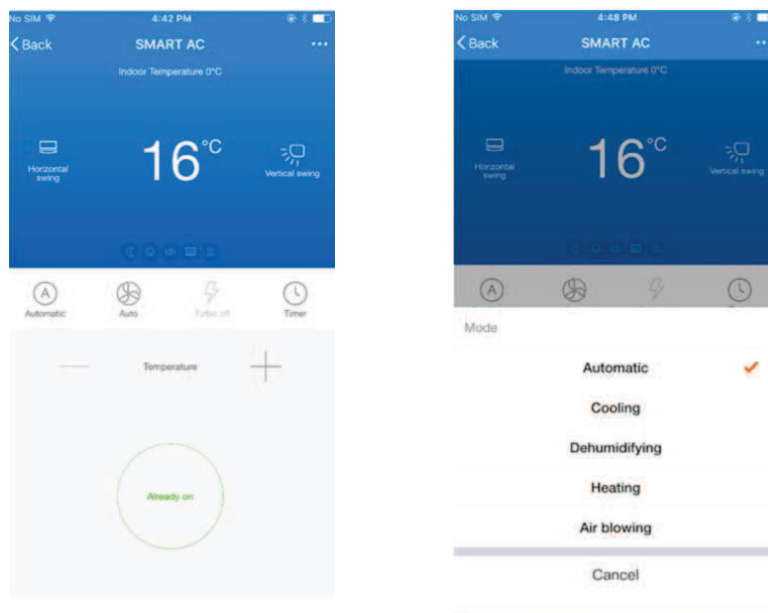
3.4.4 Tap on **【Speed】** to control the wind speed

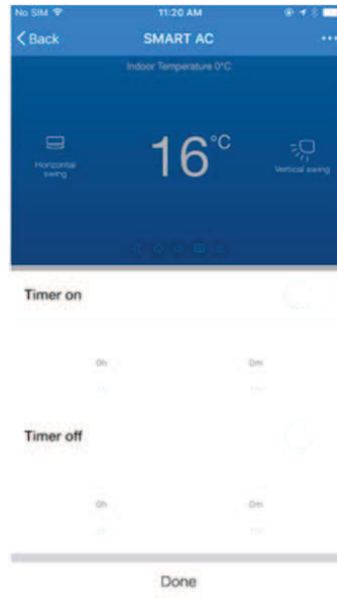
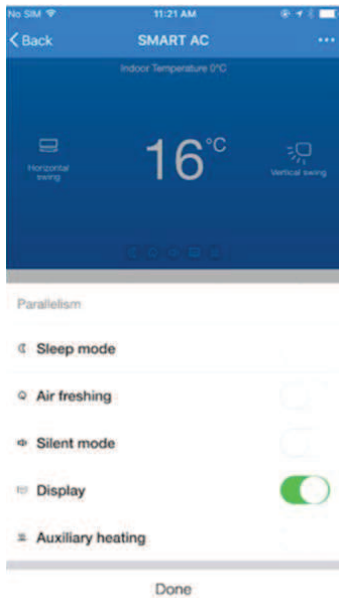
3.4.5 Tap on **【Left-right swing】** to turn on/off left-right swing function

3.4.6 Tap on **【Up-down swing】** to choose the wind direction such as swing, direction 1, direction 2, direction 3, direction 4, direction 5 and etc.

3.4.7 Tap on **【Multiple functions】** to select more functions such as sleep, air freshening, electrical heating. “Display” function is to turn on/off the display screen of air conditioner.

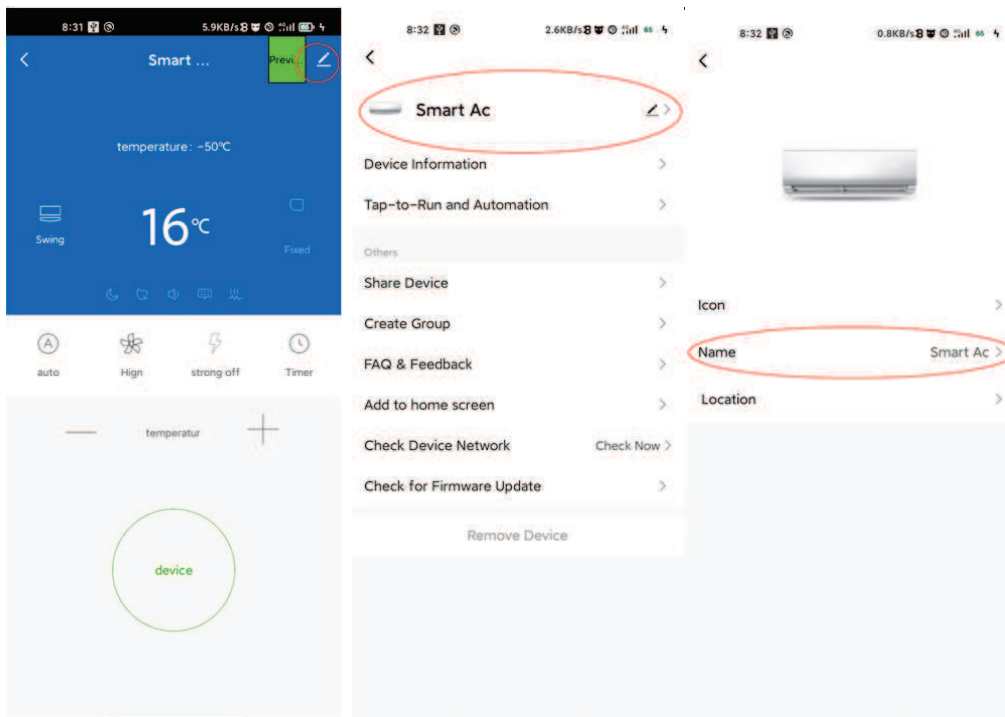
3.4.8 Tap on **【Timer】** to automatically turn Air conditioner on/off at a specific time.





### 3.5. Modify device name

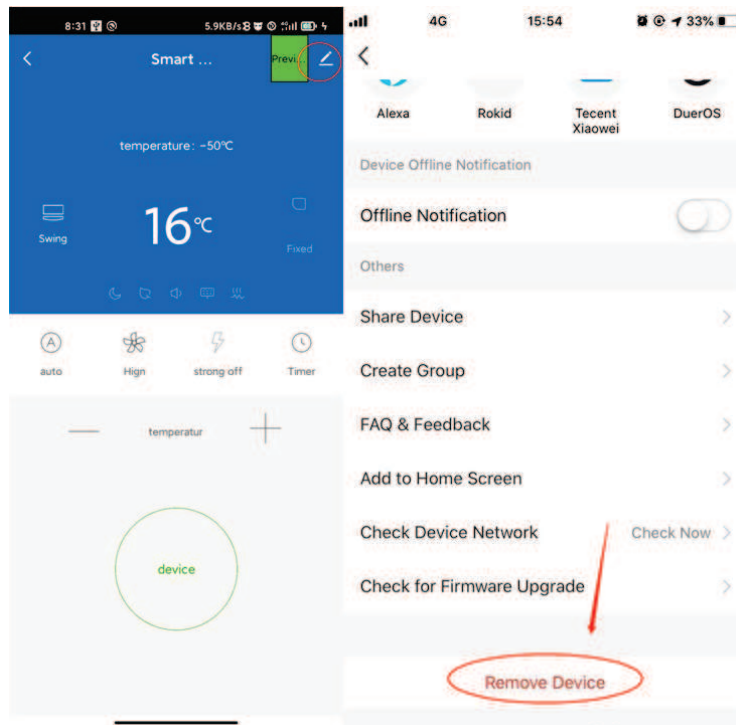
Tap on upper right corner of the main control interface, select **【Modify】** , type in the new device name on the pop-up dialog, and tap on **【Save】** .



### 3.6. Delete device or Reconnection

3.6.1 Tap on upper right corner of the main control interface, select **【Remove device】** , the dialog pops up to notify you whether to remove device. Tap on **【Confirm】** , device will be removed from the App and switched to reset status.

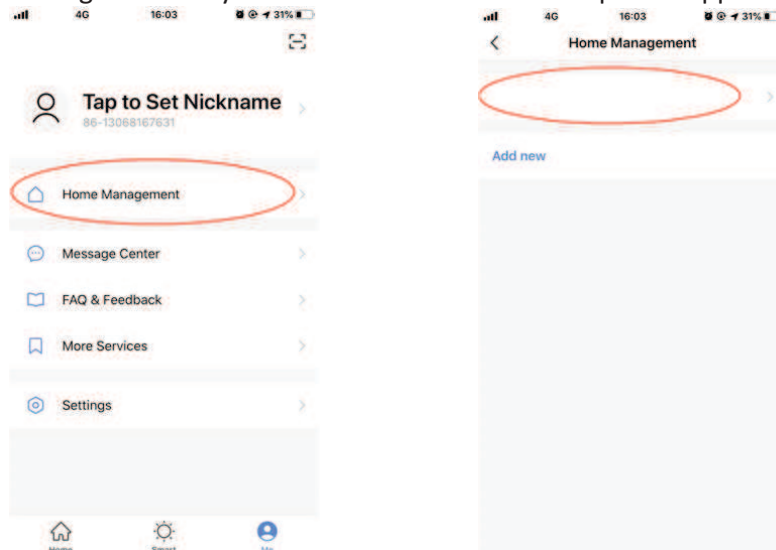
3.6.2 Long press the reset-button for 5s— buzzer sounds— the WIFI icon on device is quickly flashing, It will force an existing connection to be disconnected and needs to be re paired.

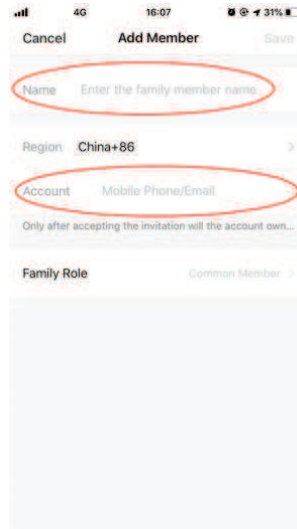
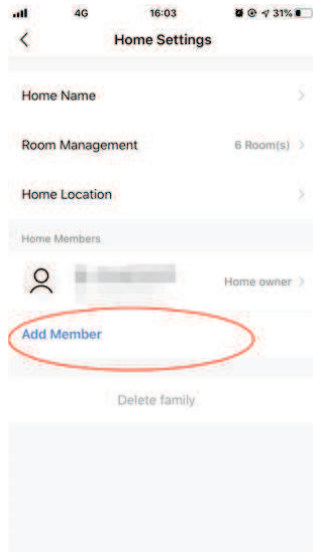


### 3.7. Share device

Tap on **【Home Management】** , select **【Home name】** - **【Add Member】** ,input the account you want to share.

in other's account number, tap on **【Confirm】** . The person would receive the sharing settings and easily control the device with smartphone App.

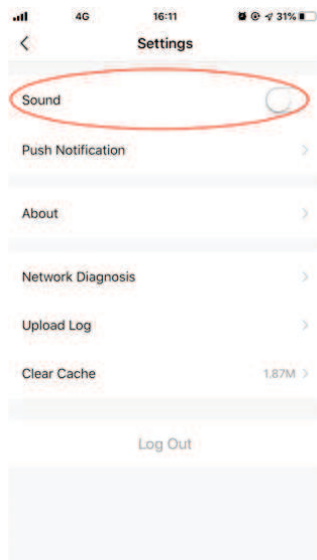




Remarks: If you sign in with a third-party account (Email address, Facebook and Twitter), you need to bind to your mobile number in order to share device with others.

### 3.8. Vibration and sound

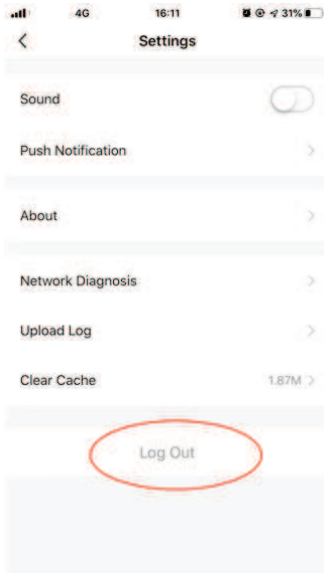
On **【Profile】** page, tap on **【Settings】** button at upper right corner. You could then turn/off vibration or sound, as shown in the screenshot below.



## 4. Profile

### 4.1. Logout

On **【Profile】** page, tap on the personal profile menu, you could then logout the current account.

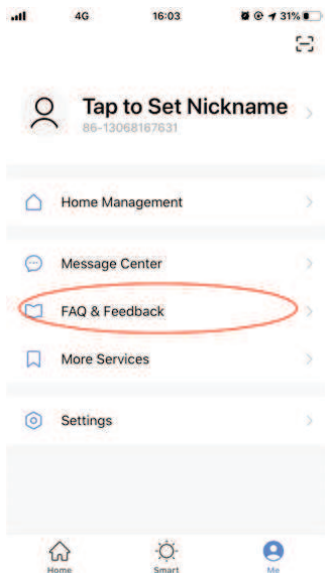


## 4.2. Modify profile information

On **【profile】** page, tap on the personal profile menu to modify the profile picture, name and other account information.

## 4.3. FAQ&Feedback

On **【profile】** page, tap on **【Faq&qFeedback】** menu to submit your feedback.



## **5.WIFI Attentions**

### **5.1 Important notifications**

To prevent unnecessary harm, please keep in mind of the following notifications

Please don't use Wi-Fi where the wireless device is not allowed, such as airport, medical places and etc.

Please don't turn on your smartphone in dangerous places, such as gas station, fuel or chemicals manufactures, and etc.

Please don't use mismatched devices.

Please find a qualified repair man to fix the Wi-Fi.

Please refer to the user manual for the detailed connection methods, please don't randomly use mismatched devices.

### **5.2 Notifications:**

5.2.1 The App control quality is affected by your smartphone, Wi-Fi network, distance with router, and internet status. Sometime it is not very smooth. It has nothing to do with air conditioner itself;

5.2.2 If you find it failed to control with your smartphone, please check your internet status at first, then check whether it is successfully connected with air conditioner; If these circumstances are alright, please delete the device first on your App and start the procedures all over again from the step 3.2.

5.2.3 If you still cannot solve the issues with the methods above, please control the Air conditioner with your normal remoter and then request for after-sale service.