



THOR
K I T C H E N[®]

INSTALLATION INSTRUCTIONS

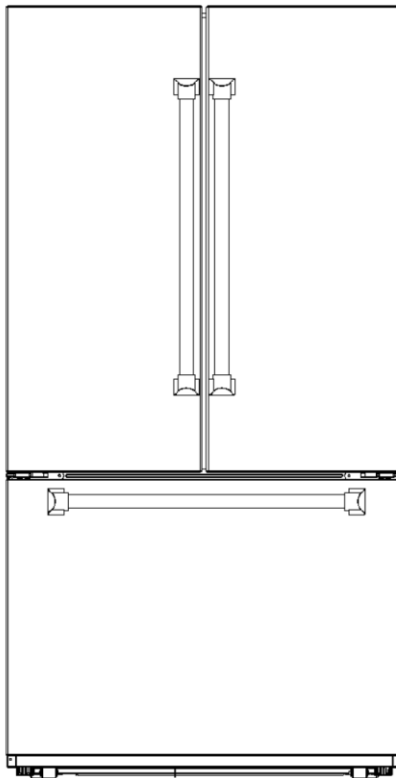
**36 INCH 20.2 CU FT COUNTER DEPTH
FREESTANDING FRENCH DOOR
REFRIGERATOR WITH INTERNAL
WATER AND ICE**

TRF3603FD
TRF3603FDW
TRF3603FDB

INSTALLATION INSTRUCTIONS MANUAL

36 INCH 20.2 CU FT COUNTER DEPTH FREESTANDING FRENCH DOOR REFRIGERATOR W/ INTERNAL WATER AND ICE

TRF3603FD / TRF3603FDW / TRF3603FDB



THOR
K I T C H E N[®]

TABLE OF CONTENTS

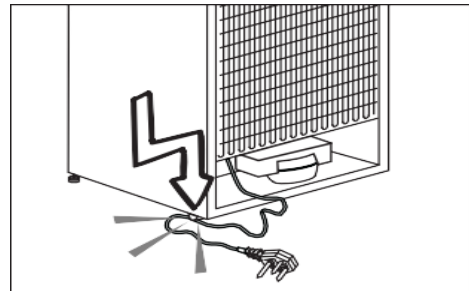
1. IMPORTANT SAFETY AND ENVIRONMENTAL INSTRUCTIONS	04
1.1 General Safety.....	04
1.2 Intended Use	05
1.3 Children's Safety.....	05
1.4 Compliance with the WEEE Directive and Disposing the Waste Product.....	06
1.5 Compliance with the RoHS Directive.....	06
1.6 Packaging Information.....	06
1.7 Hydrocarbon (HC) Warning.....	07
1.8 For Products with a Water Dispenser/Ice Machine.....	07
2. INSTALLATION PREPARATION.....	08
2.1 List of Included Accessories.....	08
2.2 List of Refrigerator Packaging Materials.....	09
2.3 Disposal of Old Appliance.....	10
2.4 Energy Saving.....	10
2.5 Adjust the Feet.....	11
2.6 Removal of Glass Shelves.....	11
2.7 Removal of Door Bin.....	12
2.8 Replacement of Filters.....	12
2.9 Install the Bypass Plug.....	13
3. PRODUCT SIZE.....	14
4. BEFORE FIRST USE.....	15
4.1 Recommended Cleaning Before First Use.....	15
4.2 Safety Notes.....	15
4.3 Caution: Before energizing.....	15
4.4 Electrical and Grounding Instructions.....	15
4.5 Water Inlet Pressure Requirement.....	15
5. DOOR HANDLE INSTALLATION.....	16
6. CABINET SIZE.....	17
7. CUT OUT DIMENSION & WATER CONNECTION.....	18
8. WARRANTY.....	20

1. IMPORTANT SAFETY AND ENVIRONMENTAL INSTRUCTIONS

This chapter contains safety information that will help you avoid the risk personal injury or property damage. Failure to follow these instructions shall render any product warranty void.

1.1 General Safety

- This product can be used by children at age 8 and above and those people who have limited physical, sensory or mental capabilities and people who lack experience and information on the condition that they have been given the instructions about the safe use of the product, they are supervised and the risks have been eliminated. Children should not play with the product. Cleaning and care should not be performed by children unless they are supervised by an adult.
- Unplug the product if you encounter a failure during use.
- If the product malfunctions, it must not be operated until repaired by the authorized service provider. Risk of electric shock!
- Plug the product into a grounded socket protected by a fuse that corresponds to the value on its nameplate. Have a qualified electrician ground the product. Our company cannot be held responsible for damages resulting from the failure to use the product with a grounded socket pursuant to local regulations.
- Unplug the product when not in use.
- Never wash the product by spreading or pouring water onto it! Risk of electric shock!
- Never touch the plug with wet hands!
- Never unplug the product by pulling the cable. Always pull the plug by holding the socket
- Do not plug the refrigerator if the wall socket is loose.
- Never connect your refrigerator to energy saving devices.
- Such systems are harmful to your product.
- Unplug the product during installation, care, cleaning and repairing procedures.
- Always have the Authorized Service Provider install the product and establish its electrical connections. The manufacturer cannot be held responsible for damages caused by procedures performed by unauthorized persons.
- Do not eat cone ice cream or ice cubes immediately after you take them out of the freezer compartment! This may cause frostbite in your mouth!
- Do not touch frozen food with wet hands! They may stick to your hand!
- Do not put bottled or canned liquid beverages in the freezer compartment. They may burst!
- Never use steam or steam cleaners to clean or defrost the refrigerator. Steam gets into contact with the live parts in your refrigerator, causing short circuit or electric shock!
- Do not use mechanical devices or other means to accelerate the defrosting process other than those recommended by the manufacturer.
- Never use the parts in your refrigerator such as the door and drawer as a means of support or step. This may cause the product to tip over or damage the parts of it.



1. IMPORTANT SAFETY AND ENVIRONMENTAL INSTRUCTIONS

- Do not damage the parts where the refrigerant is circulating with drilling or cutting tools. The refrigerant that might blow out when the gas channels of the evaporator, pipe extensions or surface coatings are punctured causes skin irritations and eye injuries.
- Do not cover or block the ventilation holes in your refrigerator with any object.
- Place the beverage with higher proofs tightly closed and vertically.
- Do not use gaseous sprays near the product since there is the risk of fire or explosion!
- Flammable items or products that contain flammable gases (e.g. spray) as well as explosive materials should never be kept in the appliance.
- Do not place vessels filled with liquid onto the product. Splashing water on an electrical part may cause electric shock or the risk of fire.
- Do not store items that need precise temperature adjustment (such as vaccines, heat-sensitive medication, science materials etc.) in the refrigerator.
- If you are not going to use the product for a long time, unplug it and remove the food in it.
- If there is a blue light on the refrigerator, do not look at this light with optical tools.
- Exposing the product to rain, snow, sun or wind is dangerous in terms of electrical safety.
- In products with mechanical control (thermostat), wait for 5 minutes to plug in the product again after unplugging.
- Do not overload the refrigerator. Objects in the refrigerator may fall down when the door is opened, causing injury or damage. Similar problems may arise if any object is placed onto the product.
- If the product has a door handle, do not pull the handle when re-locating the product. The handle might be loose.
- Be careful not to jam your hand or any other body part in the moving parts of the refrigerator.
- Do not put your hand or any other foreign materials into the ice machine while it is operating.

1.2 Intended Use

- This product has been designed for domestic use. It is not suitable for commercial use and it must not be used out of its intended use.
- It must be used only for storing food.
- The manufacturer will not take any responsibility for damages resulting from improper use or transport.
- Original spare parts will be available for 10 years after the purchase date of the product.

1.3 Children's Safety

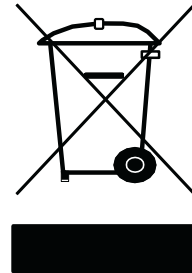
- If there is a lock on the door of the product, the key should be kept out of the reach of children.
- Do not let children play with the product.

1. IMPORTANT SAFETY AND ENVIRONMENTAL INSTRUCTIONS

A	<p>DANGER:</p> <p>Before disposing your old refrigerator or freezer:</p> <ul style="list-style-type: none">• Children may get locked inside.• Remove the doors.• Leave the shelves to prevent children from getting inside the product easily.
----------	---

1.4 Compliance with the WEEE Directive and Disposing the Waste Product

- This product conforms to the EU WEE Directive (2012/19 EU).
- This product bears a classification symbol for waste electrical and electronic equipment (WEEE).
- This product has been manufactured from high quality parts and materials which can be reused and are suitable for recycling.
- Therefore, do not dispose the product with normal domestic waste or other waste at the end of its service life.
- Take it to a collection center for recycling electrical and electronic equipment.
- Please consult local authorities to learn about the locations of such collection center.



1.5 Compliance with the RoHS Directive:

- The unit you have purchased conforms to the EU RoHS Directive (2011/65/AB). It does not contain harmful or prohibited materials specified in the Directive.

1.6 Packaging Information

- Packaging materials of the product have been manufactured from recyclable materials in accordance with our National Environment Regulations.
- Do not dispose the packaging materials with normal domestic waste or other types of waste.
- Take these materials to a recycling point designated by local authorities

A	<p>DANGER:</p> <p>Risk of Fire or Explosion:</p> <ul style="list-style-type: none">• This product uses flammable refrigerant.• Do not use mechanical devices to defrost the refrigerator.• Do not use chemicals for cleaning.• Do not pierce the refrigerant pipe.• If the refrigerant pipe is pierced, it must be repaired only by licensed service personnel.• Please consult the repair/user manual before cleaning the product. All safety instructions must be followed.• Dispose the product according to federal or local regulations
----------	--

1. IMPORTANT SAFETY AND ENVIRONMENTAL INSTRUCTIONS

1.7 Hydrocarbon (HC) Warning

- If your product's cooling system contains R-600a. This gas is flammable. Therefore, pay attention not to damage the cooling system or the piping during use and transportation.
- If damaged, keep the product away from potential fire sources that may cause it to catch fire and ventilate the room where the product is placed.

C	If the product is damaged and if you see gas leak, please keep away from the gas. It may cause frostbite when it gets into contact with the skin. (including R134
C	Ignore this warning if the cooling system of your product contains R134a.
C	Type of gas used in the product is stated on the type plate which is on the left wall inside the refrigerator.
A	WARNING: Never throw the product into fire for disposal.

1.8 For Products with a Water Dispenser/Ice Machine

- Operating pressure for cold water inlet is between 1-5.5 bars. If the water pressure exceeds 80 psi (5.5 bars), install a pressure limiting valve to your mains system.
- If the mains pressure is lower than 1 bar, you can use an auxiliary pump to compensate the low pressure.
- If you do not know how to check the water pressure, please consult a professional plumber.
- If there is a risk of water impact in your installation, always use a water impact protection equipment in that installation. Please consult professional plumbers if you are not sure if there is water impact in your installation.
- Do not make installation on the hot water inlet.
- Take the necessary measures against the freezing risk of the hoses.
- The water temperature operating range must be 0.6°C (33°F) minimum and 38°C (100°F) maximum.

A	WARNING: Never connect the product to a cold water mains with a pressure of 5.5 bars (80 psi) and above
---	---

This appliance is intended to be used in household and similar applications such as

- Staff kitchen areas in shops, offices and other working environments;
- Farm houses and by clients in hotels, motels and other residential type environments;
- Bed and breakfast type environments;
- Catering and similar non-retail applications.

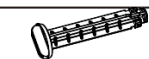
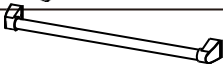

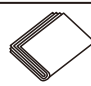
2. INSTALLATION PREPARATION

This appliance must never be installed close to heat sources, e.g. heating elements or cookers, nor in damp places.

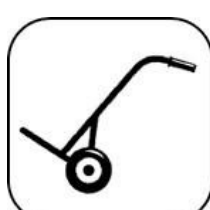
Seek the help of another individual, or two, when installing this appliance. This appliance may have sharp edges. Wear adequate PPE for the task and environment.

- To ensure the appliance is level, you should use the height adjustable feet at the front of the appliance.
- The cooling system at the rear of the appliance must not touch the rear wall. The greater the gap, the better.
- The appliance must be installed with adequate ventilation. Ensure that there is clearance above the appliance to allow air to escape and that there is space between the rear of the appliance and the wall.

2.1 List of Included Accessories

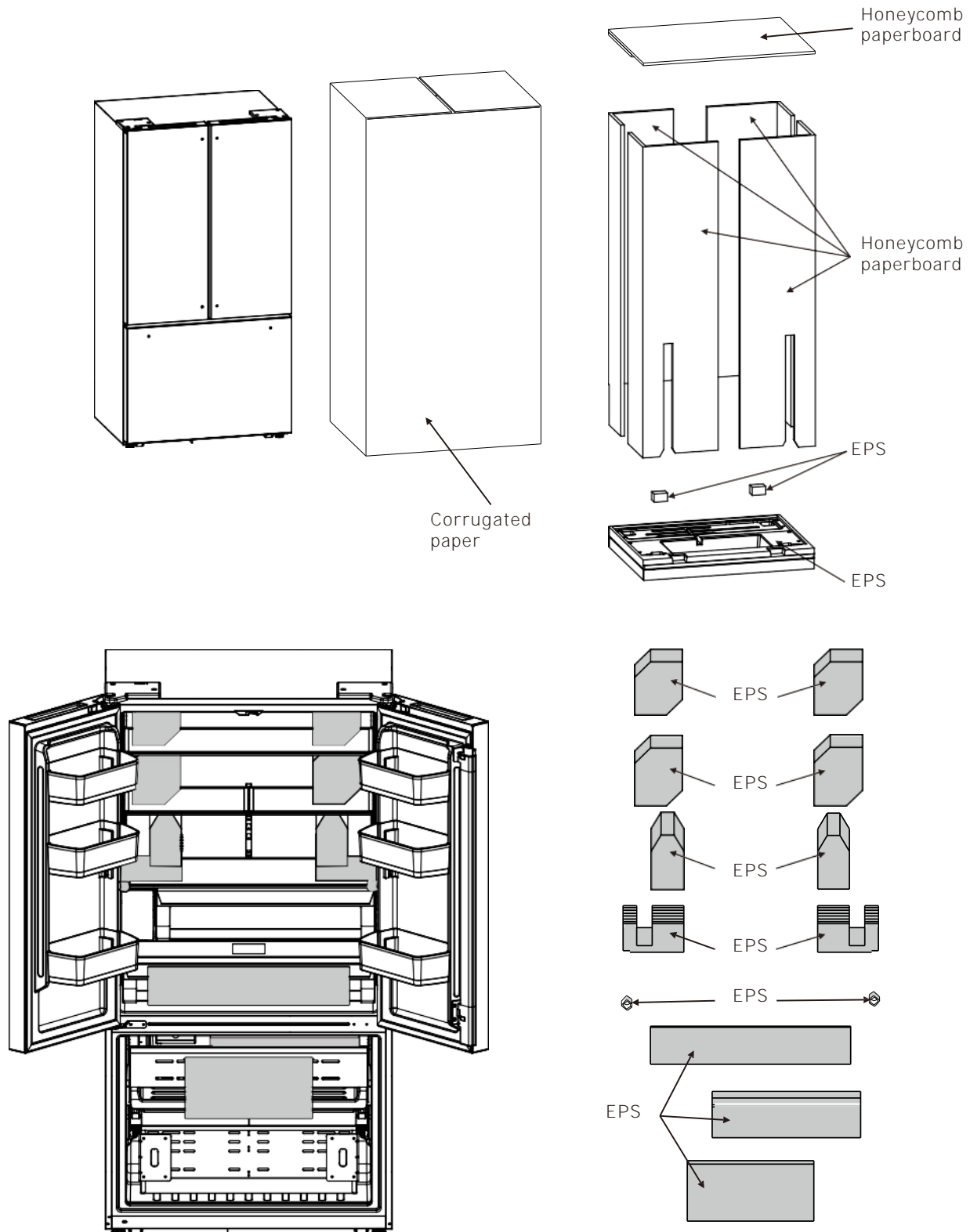
Name	Reference image	Quantity
bypass plug		1
Handle		3
Allen wrench		1
Installation Manual		1

Installation Tool List



2. INSTALLATION PREPARATION

2.2 List of Refrigerator Packaging Materials



2. INSTALLATION PREPARATION

2.3 Disposal of Old Appliance

1. Dispose of your appliance packaging properly. Refrigeration equipment must be properly disposed of in a way which protects the environment. This applies to your old appliance and to your new unit once it has reached the end of its service life.

Please according to local regulations regarding disposal of the appliance for its flammable refrigerant and blowing gas.

2. WARNING: Please ensure that old, worn appliances are rendered unusable before disposal by removing the plug, cutting the power cable, and removing or destroying any snap fastenings or bolts. You will thus prevent children from locking themselves in the appliance during play (risk of suffocation) or endangering their lives in any other way.

- The appliance must not be disposed with normal household waste collection.
- The coolant circuit, particularly the heat exchange at the back/bottom of the unit, must not be damaged.
- The symbol on the product or its packaging indicates that this product is not to be handled as normal household waste but is to be taken to a recycling collection point for electrical and electronic goods. By correctly disposing of this product you are contributing to the protection of the environment. Improper disposal endangers health and the environment. Further information about the recycling of the product may be obtained from your town hall or local waste collection department.

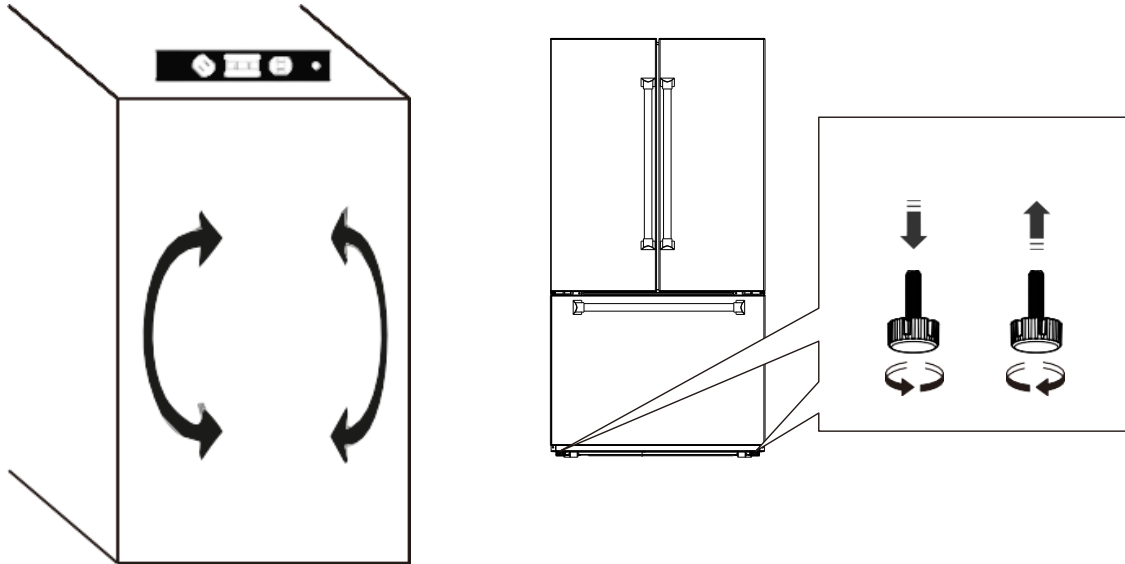
2.4 Energy Saving

For better energy saving we suggest :

- Installing the appliance away from heat sources and not exposed to direct sunlight and in a well ventilated room.
- Avoid putting hot food into the refrigerator to avoid increasing the internal temperature and therefore causing continues functionalizing of the compressor.
- Do not excessively stuff foods so as to ensure proper air circulation.
- Defrost the appliance in case there is ice to facilitate the transfer of cold.
- In case of absence of electrical energy, it is advisable to keep the refrigerator door closed.
- Open or keep the doors of the appliance open as little as possible
- Avoid adjusting the setting to temperatures too cold.
- Remove dust present on the rear of the appliance.

2. INSTALLATION PREPARATION

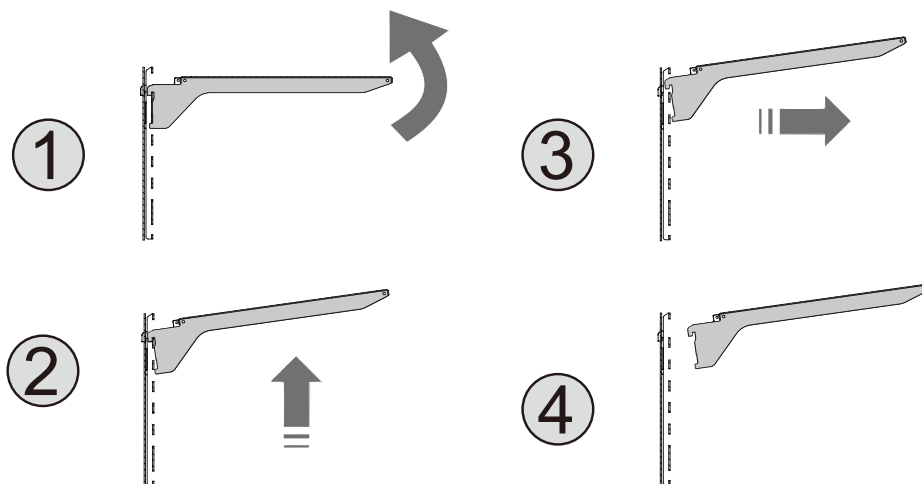
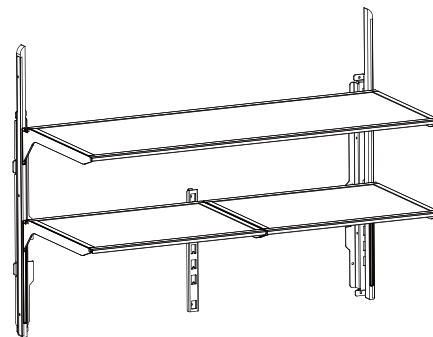
2.5 Adjust the Feet



2.6 Removal of Glass Shelves

1. Lift the front end of the glass shelf upward.
2. Lift the entire glass shelf straight up.
3. Pull the glass shelf outward.

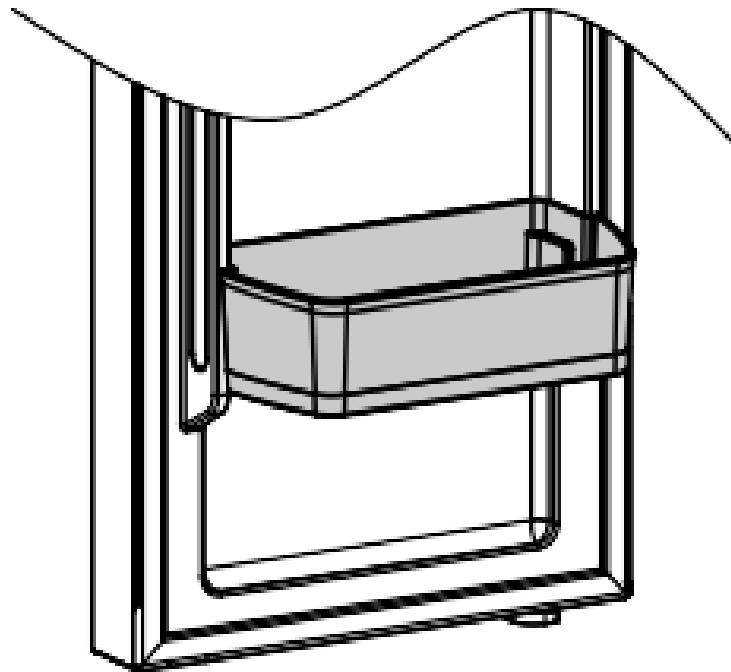
To adjust the position of the glass shelf, follow the reverse steps to insert it into the desired position.



2. INSTALLATION PREPARATION

2.7 Removal of Door Bin

To remove, lift up the door bin and then pull out straight.



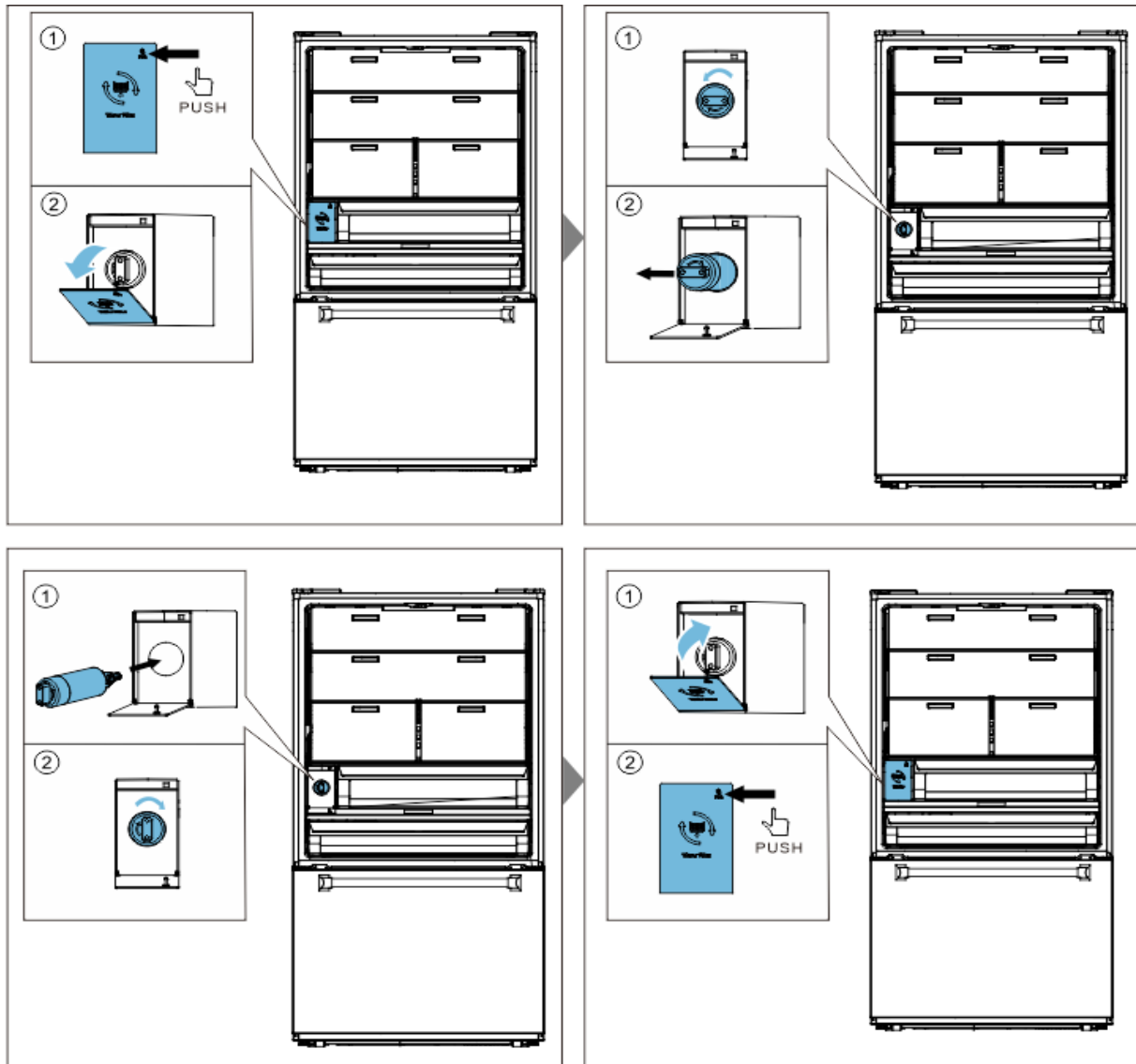
2.8 Replacement of Filters

Press and hold SELECT key for 3 seconds, filter alarm clear. Replace the water filter as shown below

Note: Turn off the water supply before replacing this part.



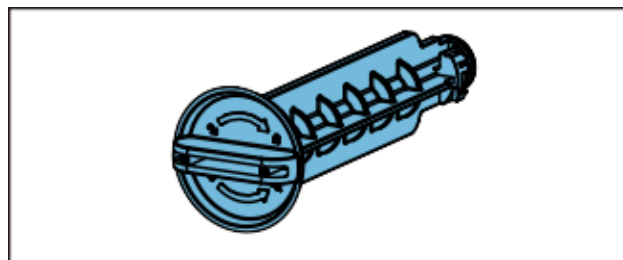
2. INSTALLATION PREPARATION



2.9 Install the Bypass Plug

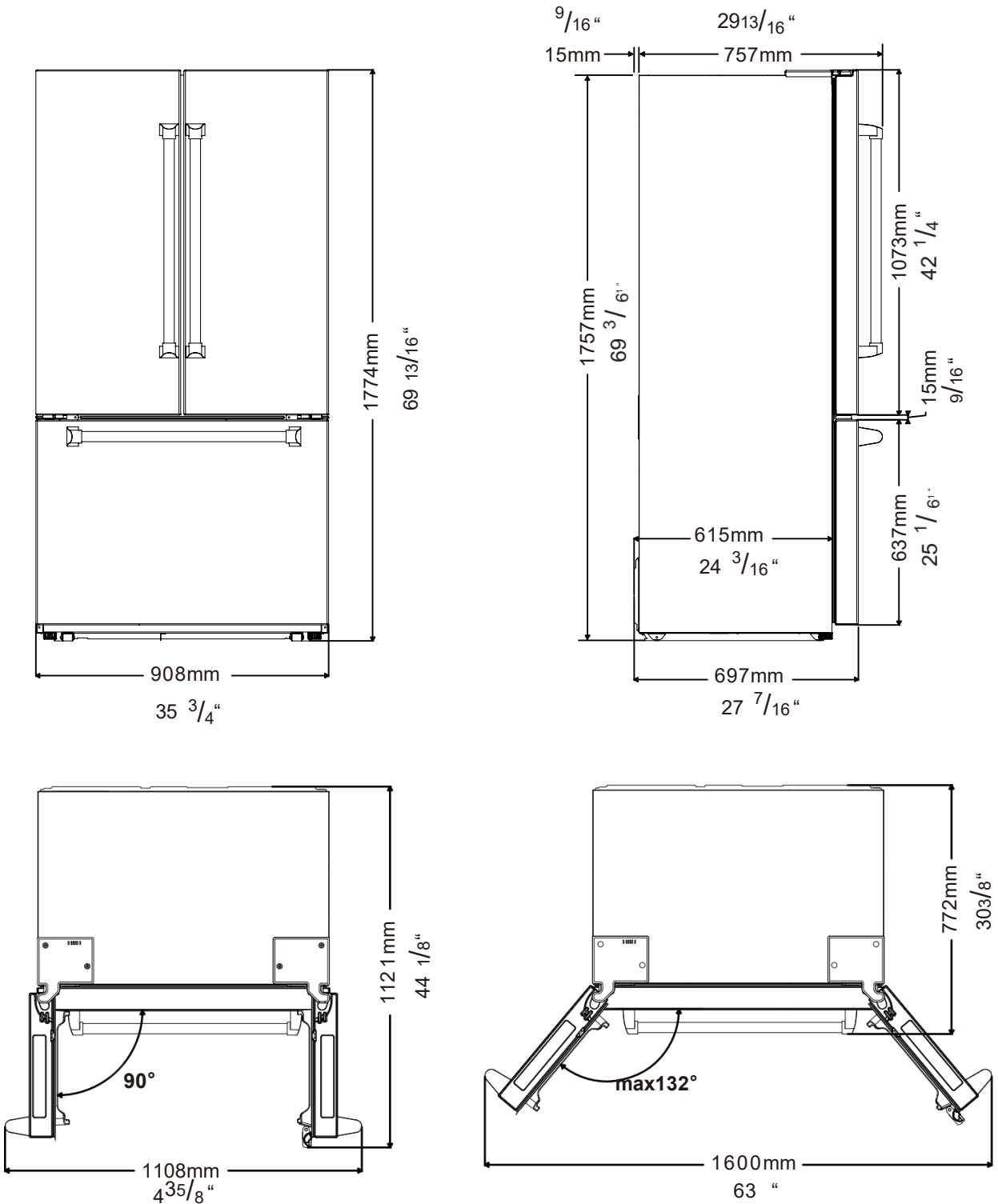
If you have an external filter installed, please remove the filter inside the refrigerator and install the bypass plug included in the accessory kit. Please take the water filter installation step for reference. The installation of bypass plug follows the same way.

Note: Turn off the water supply before replacing the part.



3. PRODUCT SIZE

Product Size



4. BEFORE FIRST USE

After installation, allow the refrigerator to stand upright and unplugged for at least 4 hours before turning it on. If the unit was transported on its side or back, it must remain upright and unplugged for at least 24 hours before connecting to power

4.1 Recommended Cleaning Before First Use:

Before using the appliance for the first time, clean the interior with a solution of bicarbonate of soda and warm water, then thoroughly dry all surfaces. A slight odor may be noticeable during initial use; this will disappear as the appliance begins to cool.

Please note:

- The refrigerator section will initially cool to approximately 41 °F (5 °C), and the freezer section to approximately 0°F (-18 °C). The appliance will operate continuously until it reaches the correct temperature.
- If the appliance is switched off, wait at least five minutes before turning it on again to avoid potential damage to the compressor.
- The refrigerator cools food by chilling the back surface of the interior cavity. Frost may form on this surface, but it is normal and will gradually melt and drain through the small outlet at the bottom, where it evaporates harmlessly. Frost on the back surface is not a malfunction.

4.2 Safety Notes

Never store flammable or explosive materials, or strong corrosive acids or alkalis in the appliance.

Avoid inserting objects that could damage the internal surfaces or the cooling system.

4.3 Caution: Before energizing :

After moving the product, allow it to stand for 4 hours before connecting it to a power source.

4.4 Electrical and Grounding Instructions :

1. During operation, this product must be reliably grounded. Use an independent dedicated single-phase three-pin socket. Do not connect it to power strips, extension cords or multi-port adapters shared with high-power appliances, to avoid circuit overload and overheating that may cause safety hazards.
2. The power cord must not be squeezed, bent, twisted, crushed or compressed by cabinets or heavy objects.
3. It is prohibited to extend, modify or splice the power cord without permission. If the power cord is damaged, it must be replaced by authorized maintenance personnel with dedicated parts.

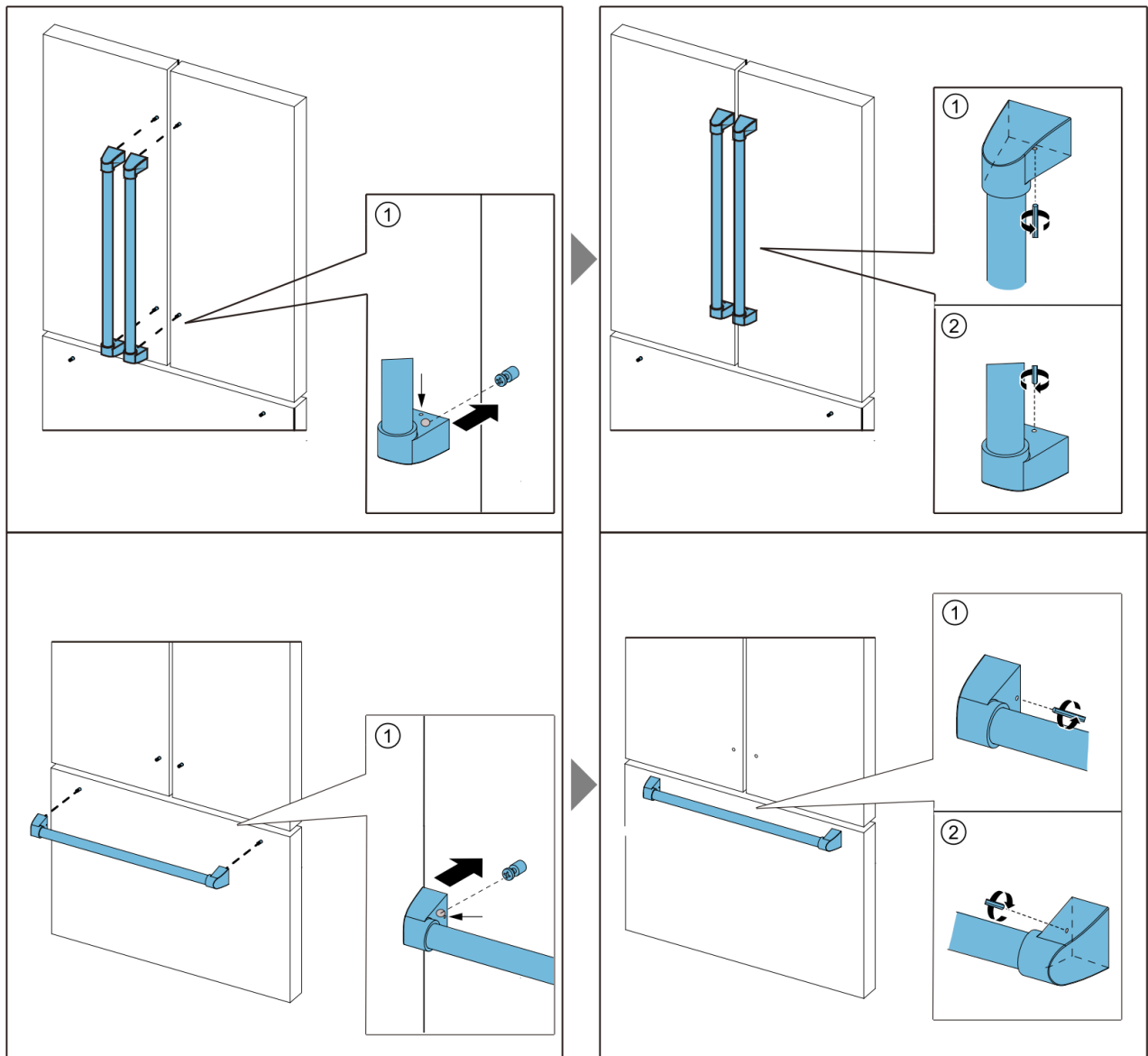
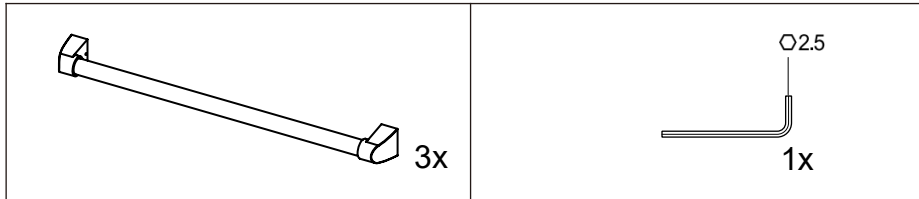
4.5 Water Inlet Pressure Requirements

Maximum inlet pressure: 5.5 bar

Minimum inlet pressure: 1.7 bar

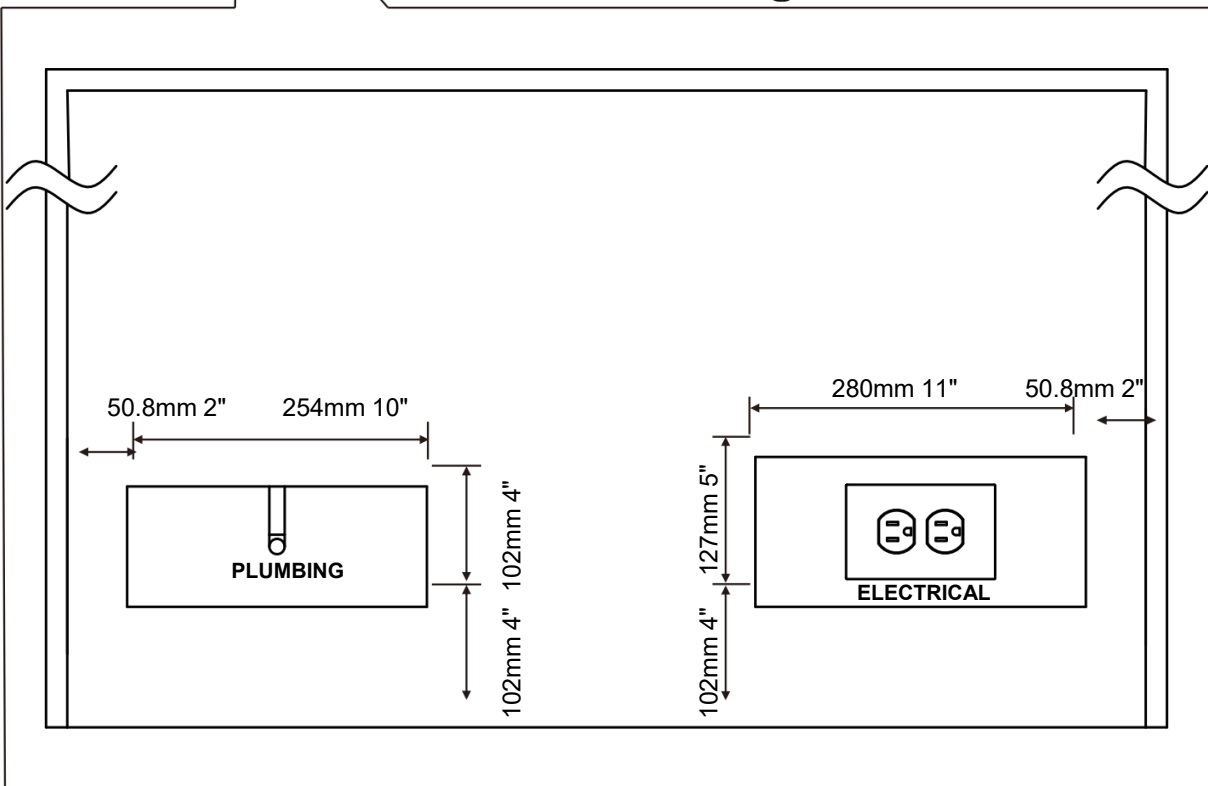
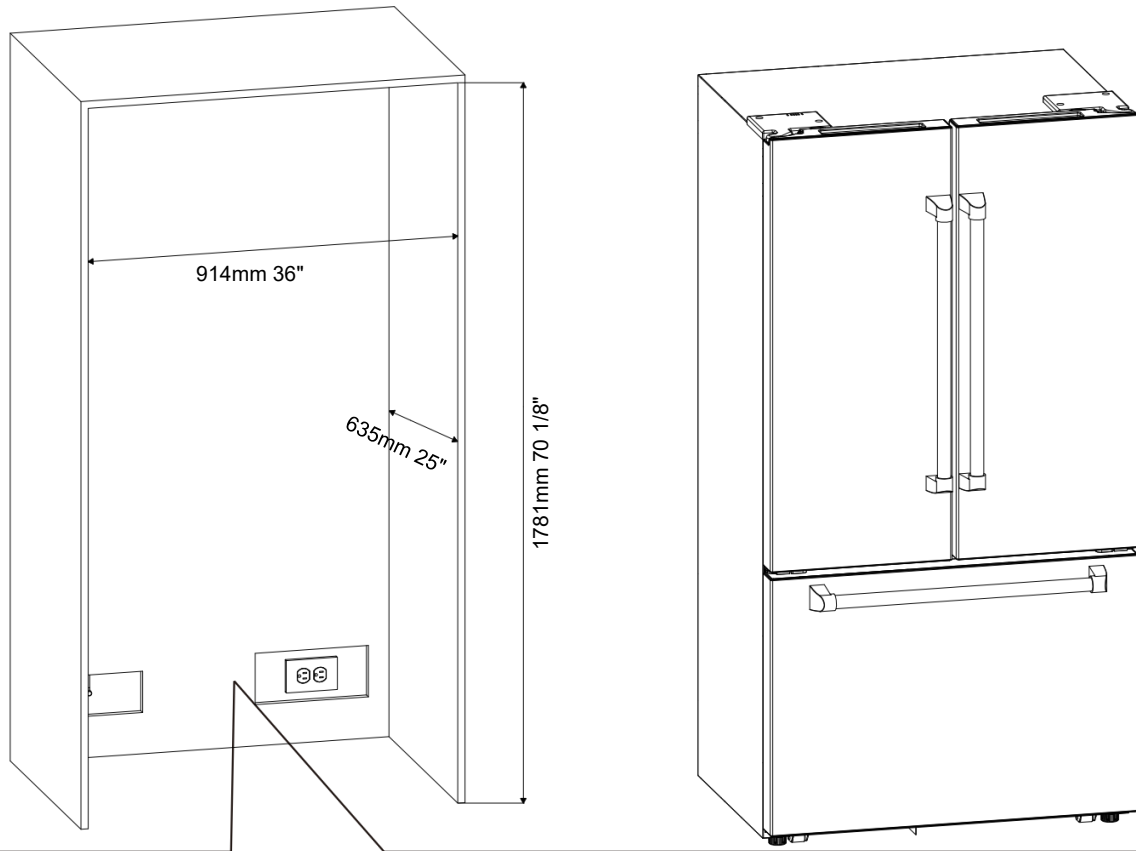
5. DOOR HANDLE INSTALLATION

Door Handle Installation



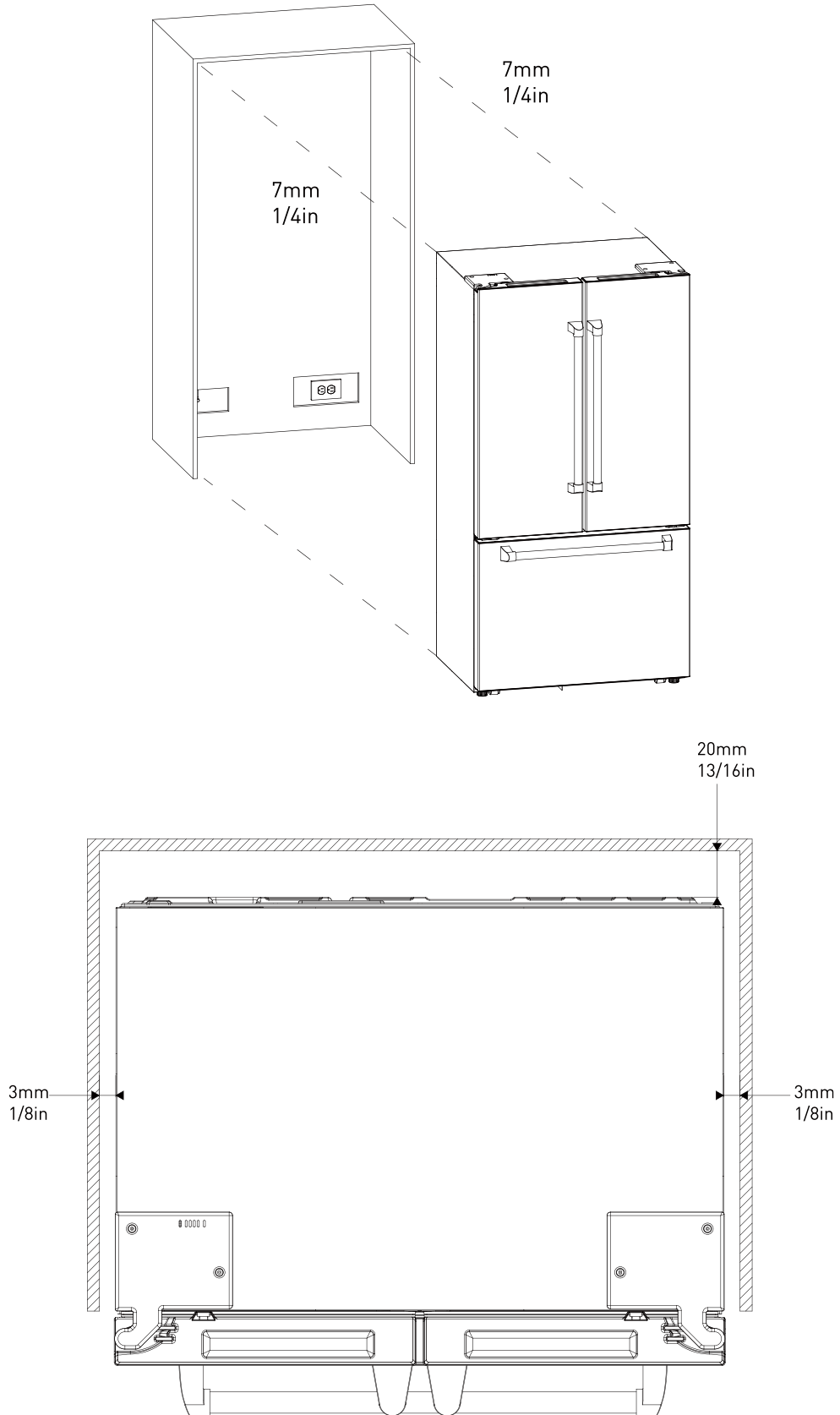
6. CABINET SIZE

Cabinet Size



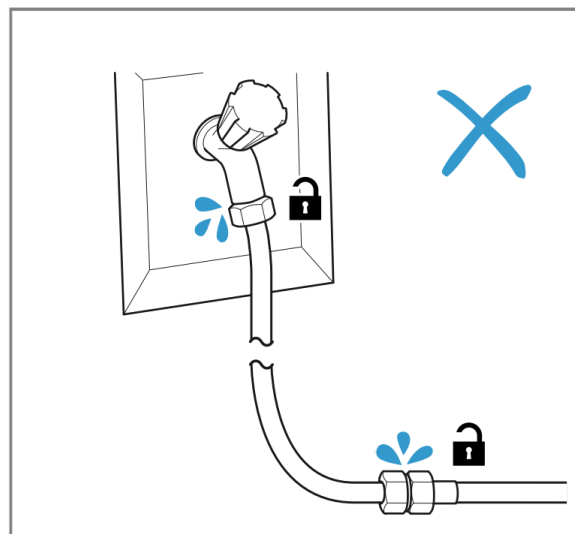
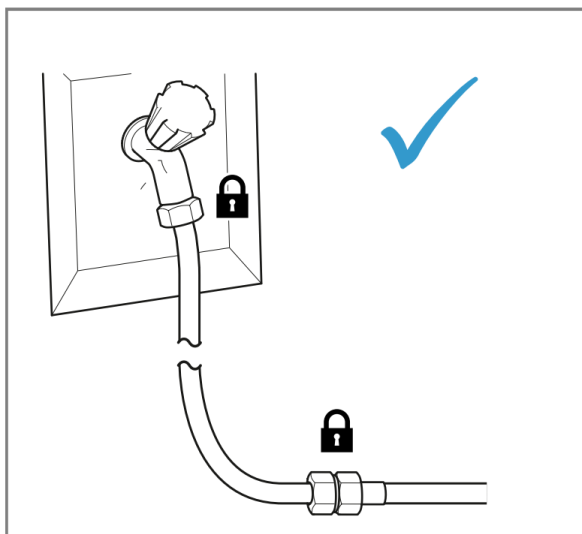
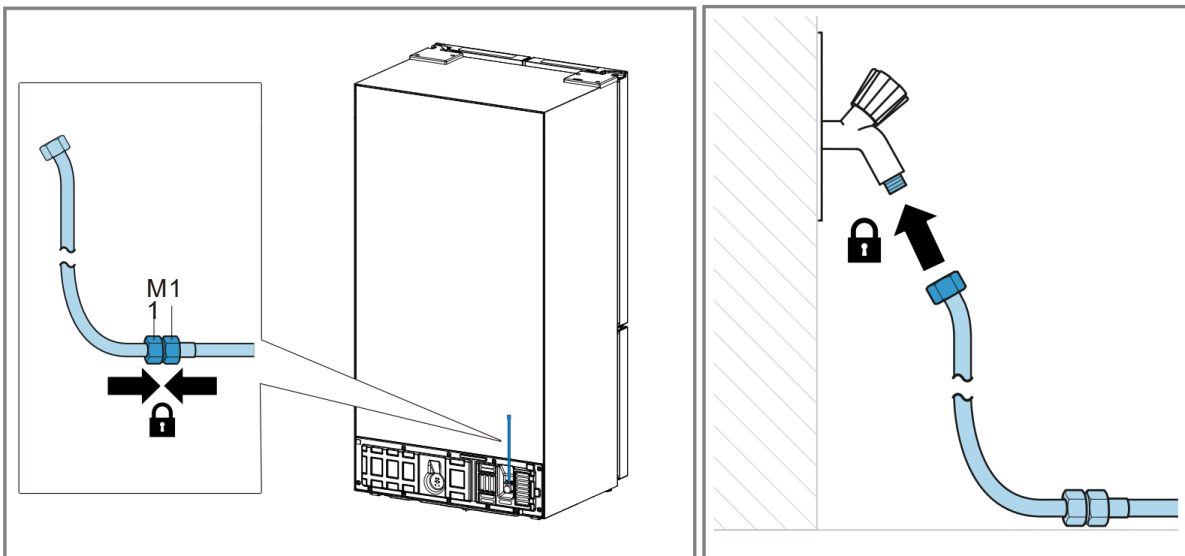
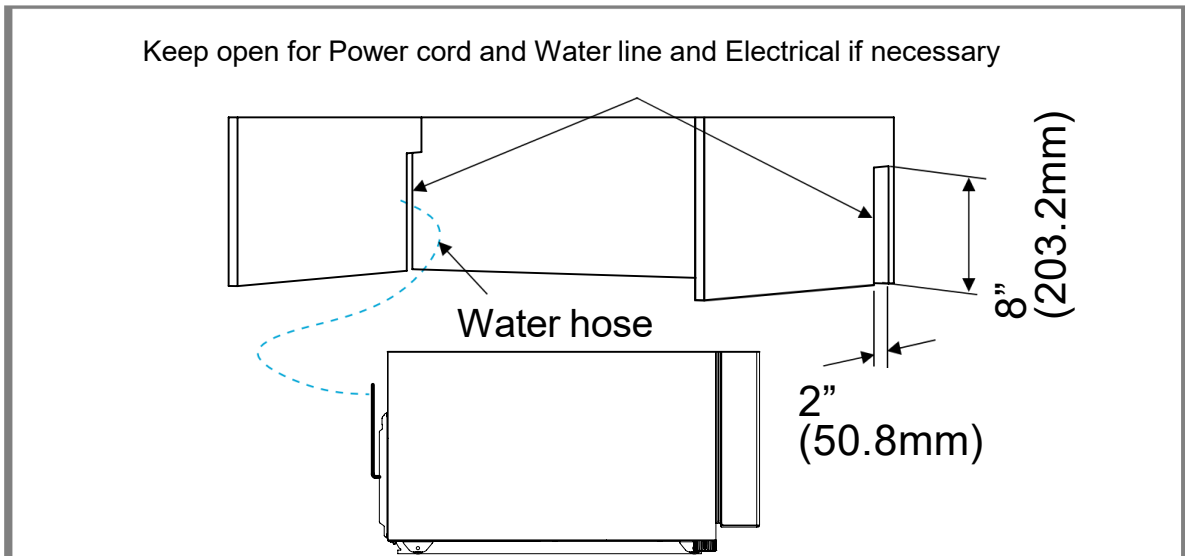
7. CUT OUT DIMENSION & WATER CONNECTION

Cut out dimension



7. CUT OUT DIMENSION & WATER CONNECTION

Water connection



8. WARRANTY



THOR
K I T C H E N[®]

Warranty&Service

This appliance has been manufactured by Thor International, 10830 Ada Ave, Montclair, CA 91763 United States.

For Customer Service, please call (877) 288 - 8099

For the most up to date warranty and service policy, please refer to our website WWW.THORKITCHEN.COM/WARRANTY-REGISTRATION

For in-warranty service requests, please visit our website at WWW.THORKITCHEN.COM/SERVICE

Please Note: You must provide proof of purchase or installation date for any in-warranty service requests

We Stand Behind the Quality of Our Appliances.

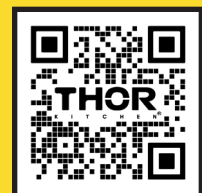
Reliability and customer satisfaction are our top priorities. We offer a solid two-year warranty on both parts and labor. Enjoy professional-grade performance with the confidence that we've got you covered.

Warranty Registration Made Easy.

01 Scan the QR Code or visit thorkitchen.com/register-your-product.

02 Input your purchase and product information and select register.

03 That's it. You're all set. Enjoy!



WARRANTY



PARTS

Questions: service@thorinternational.com