



SCAN TO VIEW  
IN YOUR KITCHEN



**Product:** 30-inch Built-in Microwave Speed Oven

**Model Number:** TM030

### TECHNICAL DETAILS

Installation Type	Built-In
Color/Finish	Stainless Steel
Capacity	1.6 cu. ft.
Microwave Power	1000W
Circuit Breaker	20 A (Dedicated)
Volts	120 V
Frequency	60 Hz
Plug Type	NEMA 5-20p - 3 Prong
Power Cord Length	59 1/16"
Accessories Included	Reversible Rack Turntable Ceramic Plate

### CONTROL PANEL DETAILS/ FEATURES

Sensor Cook	Yes
Defrost	Yes
Child Safety Lock	Panel Lock - Activate/Deactivate Childproof Lock
Control Lock	Yes
Power Levels	10
Cooking Modes	Auto Defrost, Air Fry, Sensor Cook, Sensor Reheat, Popcorn, Beverage, Pizza And Auto Menu
Memory/Kitchen Timer	Yes
Start/Add-A-Minute	Yes - Add 30 Seconds
Timer/Clock	Yes

### FEATURES & BENEFITS

- Powerful Performance:** Boasting a 1000-watt output with 10 power levels, convection fan, broiler, and baking elements for versatile culinary adventures.
- Spacious Storage:** 1.6 cu ft Stainless Steel Cavity for easy cleaning and spacious design.
- Ceramic Speed Cooking Plate:** 14.1 inch ceramic plate provides even heating for speed cooking and pizzas.
- Air Fry:** Experience crispy perfection while reducing oil usage for healthier indulgence.
- Sleek Design:** Stainless steel built-in cabinet design features a full touch LCD display that's easy to operate and clean.
- Control Panel Child Lock:** Securely keep your kitchen safe with the child lock feature.



### PRODUCT DIMENSIONS & WEIGHT

Product Dimensions (WxDxH)	29 3/4" x 22 3/8" x 19 5/8"
Cavity Dimensions (WxDxH)	16 9/16" x 16 9/16" x 9 13/16"
Cutout Dimensions (WxDxH)	28 1/2" x 24 3/16" x 19 3/16"
Turnable Diameter	14 1/10"
Net Weight	89.29 lbs
Gross Weight	99.87 lbs

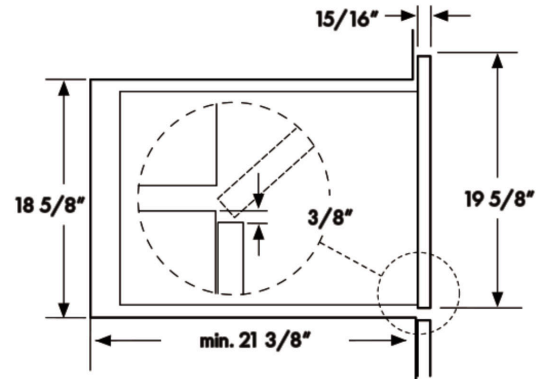
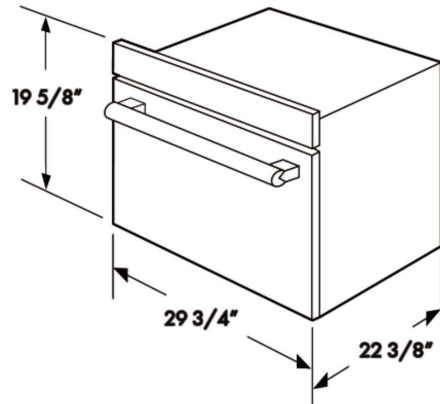
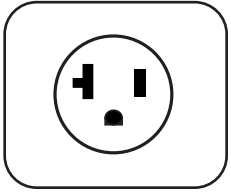


WARRANTY: 2 YEARS PARTS AND LABOR



**Plug Type:**

NEMA 5-20p - 3 Prong



Ventilation openings  
behind, min 38 3/4 in<sup>2</sup>

