

# PIONEER® QUANTUM Ultra™

## Ceiling Concealed Ducted Split Systems

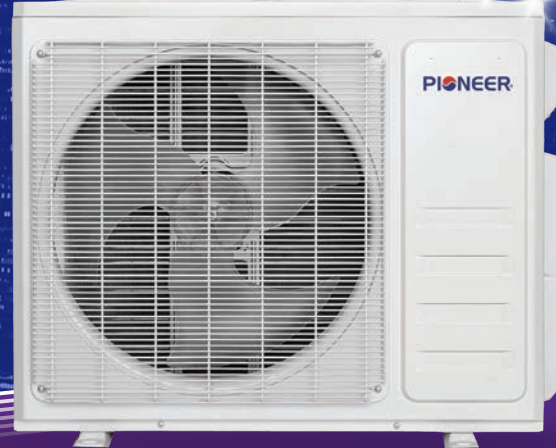
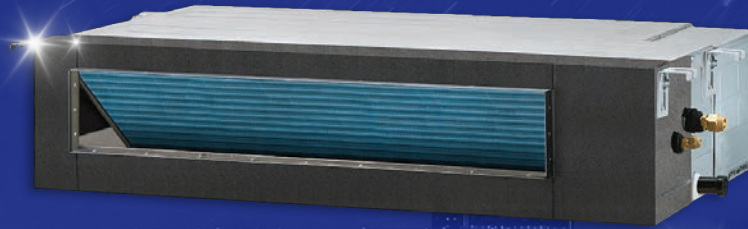
23~24 SEER Ultra High Efficiency

Heat Pump + DC Inverter in One System

Single Zone (9000~24000 BTU/hr)

110~120V / 208V~230V, 60Hz, 1Ph

Wireless Access Via Free Smartphone App



# R YT-24

DC INVERTER HEAT PUMP

INVERTER++  
TECHNOLOGY

R454b

Smart  
Airflow

High  
Efficiency

Insulated  
DESIGN

Cloud  
Connected

DUAL  
DRAINAGE

Low Noise

WORKS  
WITH

amazon alexa

Google Assistant

Siri



Whisper-Quiet  
Operation



Dual Drain  
Options



LED  
Display



Convenient  
Maintenance



Eco-Friendly  
Refrigerant



Customizable  
Timer



Soft Breeze  
Airflow



3D Air Flow



Ultra-Thin  
Design



Power Loss  
Memory Recovery



Rapid Delivery  
Output




Energy  
Saving



Wireless  
Control

### STANDARD FEATURES

- Horizontal Ceiling Concealed Ducted Indoor Unit
- Cooling Only or Heat Pump Applications
- Ultra Slim Fully Cased Compact Cabinet Design
- Furred-In Ceiling Concealed Ducted Applications
- Full Galvanized Heavy Steel Casing for Indoor Units
- Convertible (Rear-Bottom) Air Return
- Digital LCD Screen Wired Remote Controller
- Ultra Quiet Air Delivery With High Performance
- Variable Speed ECM Indoor Fan Motors
- Heavy Gauge Closed Cell External Rubber Insulation
- Auto-Restart with Memory for Power Outages
- Timer for Preset Starting and Stopping
- Auto Changeover, Dry, and Fan Only Modes
- Season Sensitive Operational Logic
- Self-Learning Time-Demand Defrost
- Automatic Swing Directional Louvers
- Three + Auto Speed PSC Blower Motor
- Digital Motor Speed Control System
- Whisper Quiet Indoor Motor With Ball Bearings
- High Air Flow Volume for Quick Performance
- Ultra High-Efficiency Grooved Copper Tubes
- Enhanced Louvered Hydrophilic Aluminum Fins
- Latest Technologies in DC Inverter Driver System
- Dynamically Balanced Ultra Quiet Scirocco Blowers
- Anti Mildew Treatment on Blower Wheels
- Superior Energy Efficiency and Performance
- Fully Variable Speed Compressors for All Models
- Fully Charged With Environmentally Friendly R32 Gas
- Precision Controlled Compressor and Fan Motors
- Ultra Galvanized Sheet Metal Parts
- Heavy Coat of Baked Enamel Paint for the Outdoor Unit
- Durable Outdoor Fan with High Glass Content
- Extra Durable, Permanently Lubricated Outdoor Motor
- Internal Overload Protection for Motors
- Flare Type Refrigerant Connections
- Full Operating Charge of Refrigerant
- Standardized Cabinet Design for All Models
- Easy Access for Piping and Wiring Confections
- Highest Grade Components for Long Life Expectancy
- Ample Availability of Spare Parts and Accessories

Full System Model Number		RYT009GLSI24RL		RYT012GLSI24RL		RYT018GLSI24RL		RYT024GLSI24RL					
		Indoor Unit Model Number		RT009GLSILCFHG		RT012GLSILCFHG		RT018GLSILCFHG		RT024GLSILCFHG			
		Indoor Unit Model Code		Z2U30304000587		Z2U30104000478		Z2U30304000536		Z2U30304000537			
		Outdoor Unit Model Number		YN009GLSI24RPG		YN012GLSI24RPG		YN018GLSI24RPG		YN024GLSI24RPG			
		Outdoor Unit Model Code		Z2U20103009117		Z2U20103009151		Z4U20103038432		Z2U20103009200			
System Type		QUANTUM ULTRA Series Ceiling Recessed Concealed Duct Mounting Type Split Heat Pump System											
Modes		Cooling, Heating, Dehumidification, Ventilation											
Control type		Standard set with wired remote (Other optional controllers are available)											
Input power supply		208~230V~/60Hz/1P		208~230V~/60Hz/1P		208~230V~/60Hz/1P		208~230V~/60Hz/1P					
Power supply range		187~253 VAC		187~253 VAC		187~253 VAC		187~253 VAC					
Energy Star Rating		✓		✓		✓		✓					
NEEP Rating		✓		✓		✓		✓					
Cooling performance		Rated cooling capacity (at 95°F)		Btu/h		9,500		11,000		17,000		22,000	
		Cooling capacity range		Btu/h		2,000~10,400		2,000~12,300		6,000~19,400		7,550~24,600	
		EER2 Rating		Btu/W.h		12.0		11.0		11.0		11.0	
		SEER2 Rating		Btu/W.h		19.6		19.0		20.3		19.0	
		Rated Heating capacity (at 47°F)		Btu/h		9,500		12,000		18,000		25,000	
Heating performance		Rated Heating capacity (at 17°F)		Btu/h		8,400		10,200		14,500		22,000	
		Heating capacity range		Btu/h		2,500~12,300		3,100~12,300		4,000~21,400		8,700~28,500	
		HSPF2 Rating (Region IV)		Btu/W.h		10.0		8.4		10.0		10.0	
		HSPF2 Rating (Region V)		Btu/W.h		8.8		7.3		9.2		8.8	
		COP2 (at 47°F)		W/W		3.5		3.34		2.8		3.34	
		Max. Heating capacity (at 5°F)		Btu/h		7,400		8,800		13,200		18,500	
		Performance percentage				78%		73%		73%		74%	
		COP2 (at 5°F)		W/W		1.85		1.8		1.8		2.0	
		Max. Heating capacity (at -4°F)		Btu/h		5,890		7,440		11,160		15,500	
		Max. Heating capacity (at -13°F)		Btu/h		4,750		6,000		9,000		12,500	
Rated power consumption		Cooling		W		750		940		1,450		1,870	
		Heating		W		800		1,030		1,805		2,030	
Rated power current		Cooling		A		3.2		4.1		6.3		8.1	
		Heating		A		3.5		4.5		7.8		8.8	
Min. circuit ampacity		A		10		11		12		17			
Max. circuit breaker		A		15		15		20		25			
Moisture removal		Pint/day		55		80		110		130			
Refrigerant and room size specifications		Type		R454b (A2L rated refrigerant with a lower GWP rating of 466)									
		Amount		Ozs		25.0		35.3		45.5		55.0	
		Sufficiency for max line set length		Ft		25		25		25		25	
		Adjustment amount per feet		Ozs		0.11		0.11		0.11		0.11	
		Recommended room size		Sq.Ft		250~350		350~500		500~750		750~1,000	
		Refrigerant leakage detector module		Standard / Assembled in indoor unit									
		Minimum room size (unit height 6')		SqF		28		40		51		62	
Air volume and sound level		Turbo/High/Med/Low/Mute		CFM		335/305/276/182/182		360/330/270/210/180		500/426/370/300/283		741/623/558/529/470	
				dB(A)		43/41/39		43/41/39		41/38/36		41/38/34	
External static duct pressure max		Inch WC		0.4		0.4		0.4		0.5			
Outdoor sound		dB(A)		50		52		53		54			
Connecting pipe		Gas		In (OD)		3/8"		3/8"		1/2"		5/8"	
		Liquid		In (OD)		1/4"		1/4"		1/4"		1/4"	
		Accessory line set length available		Feet		10' / 16' / 25' / 33' / 50' (can be further extended using coupling kits). Both Standard copper and fully flexible sets are available							
		Maximum allowable length		Feet		50		50		65		65	
		Maximum allowable vertical run		Feet		33		33		50		50	
Indoor unit dimensions and weight		Net unit dimensions (WxDxH)		Inch		27"-1/2 x 19"-1/4 x 7"-7/8		27"-1/2 x 19"-1/4 x 7"-7/8		35"-1/2 x 19"-1/4 x 7"-7/8		43"-1/4 x 17"-3/4 x 7"-7/8	
		Carton box dimensions (WxDxH)		Inch		35"-1/2 x 21"-7/8 x 9"-7/8		35"-1/2 x 21"-7/8 x 9"-7/8		44"-1/8 x 21"-7/8 x 9"-7/8		50"-3/4 x 22"-1/4 x 9"-7/8	
		Shipping factor				0.00192		0.00192		0.00238		0.00278	
		Net unit weight		Lbs		33.1		33.1		39.7		50.7	
		Shipping weight		Lbs		40.8		40.8		46.3		58.4	
Outdoor unit dimensions and weight		Net unit dimensions (WxDxH)		Inch		31"-7/8 x 12" x 21"-5/8		31"-7/8 x 12" x 21"-5/8		36"-1/2 x 15" x 27"-1/2		38"-1/2 x 16"-5/8 x 31"-5/8	
		Carton box dimensions (WxDxH)		Inch		32"-7/8 x 13" x 22"-5/8		32"-7/8 x 13" x 22"-5/8		37"-3/8 x 16"-1/2 x 28"-7/8		40"-1/4 x 18"-7/8 x 31"-7/8	
		Shipping factor				0.00256		0.00256		0.005		0.00694	
		Net unit weight		Lbs		52.7		58.4		90.4		104.7	
		Shipping weight		Lbs		57.1		65.0		97.0		119.0	
Connecting cable		AWG #16 x 4 Core TC-ER cable											
Temperature setting range		°F		62 ~ 86									
Working ambient temperature range for cooling		°F		5 ~ 131									
Temperature setting range for heating		°F		-13 ~ 86									

Rated cooling performance data is based on standard ARI conditions of 80°F-DB/67°F-WB Indoor and 95°F Outdoor ambient conditions. Rated heating performance data is based on standard ARI conditions of 70°F-DB/60°F-WB Indoor and 47°F Outdoor ambient conditions. Variable speed inverter systems adjust their output capacity automatically based on actual indoor and outdoor temperatures, thermostat settings and other heating or cooling loads. Capacity of the system output and related power input will vary based on these conditions. System contains A2L refrigerant and the minimal room size data must be strictly adhered to for any standard installation to avoid fire risk. This data assumes the indoor unit installation height of minimum 6 feet from the floor level. Lower levels require larger min. room sizes. Specifications and data listed herein are subject to change without notice due to constant product and engineering improvements. Always refer to the equipment nameplate for applicable exact information.