

| | |
|---------------|--|
| Job Name: | |
| Submitted By: | |



| | |
|-----------------------------|--|
| Submittal Sheet For: | RT009GLSILCFHG / YN009GLSI24RPG |
|-----------------------------|--|

Date _____
 Ref. _____

Ceiling-Concealed Ducted 19SEER Inverter Heat Pump

System Full Set Model: **RYT009GLSI24RL**

AHRI Reference Number: **217048762**

Cooling Mode Performance

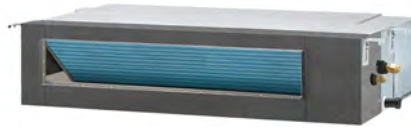
| | |
|---------------|--------------|
| Rated Cooling | 9,500 BTU/hr |
| Ambient Range | 5~131°F |
| SEER2 Rating | 19.6 BTU/W·h |
| EER2 Rating | 12.0 BTU/W·h |

* 100% Capacity @ Indoor DB 80°F / WB 67°F

Heating Mode Performance

| | |
|---------------|--------------------|
| Rated Heating | 9,500 BTU/hr |
| Ambient Range | -13~86°F |
| HSPF2 IV (V) | 10.0 (8.8) BTU/W·h |
| COP2 (47°F) | 3.5 W/W |

Heating (17°F) = 8,400 BTU / Heating (5°F) = 7,400 BTU / COP2 (5°F) = 1.85 W/W



Ceiling-Concealed Ducted Indoor Unit



Outdoor Condensing Unit



User-Selected Installation Kit



Handheld Remote Controller

Electrical Information

| Rated Input (W) | Cooling | Heating |
|-------------------|---------------------|---------|
| | 750 | 800 |
| Rated Current (A) | 3.2 | 3.5 |
| Breaker Needed | 15A (Double-Pole) | |
| Power Supply | 208~230V, 60Hz, 1Ph | |

Piping and Refrigerant

| | |
|-------------------------|---------------------------|
| Liquid Line (OD) | 1/4 in |
| Suction Line (OD) | 3/8 in |
| Refrigerant Precharge | R-454b(Supports 10-50ft.) |
| Max Length/Height Diff. | 50 ft. / 33 ft. |

This combination is Energy-Star certified.



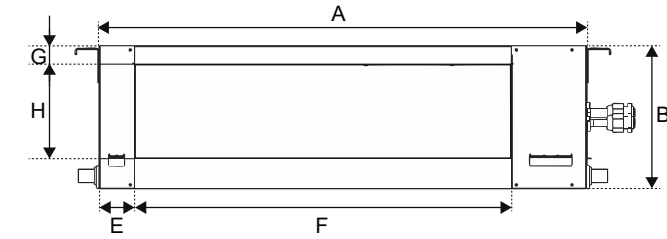
Interior Unit (Air Handler) Specifications

| | |
|----------------------|-------------------------------------|
| Type | Heat Pump |
| Sound Level (dBA) | 43 (Hi) / 41 (Med) / 39 (Lo) |
| Auto Air Circulation | 2-Way Louver (Up-Down + Left-Right) |
| Dimensions (WDH) | 27-1/2 in x 19-1/4 in x 7-7/8 in |
| Weight (lbs) | 33.1 |

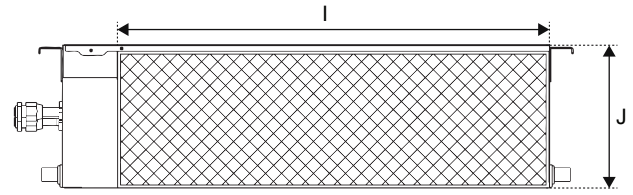
Exterior Unit (Condenser) Specifications

| | |
|-----------------------|-------------------------------|
| Sound Level (dBA) | 50 |
| Recommended Room Size | 250~350 Sq. ft. |
| Minimum Room Size | 28 Sq. ft. |
| Compressor | Inverter-Driven Rotary |
| Dimensions (WDH) | 31-7/8 in x 12 in x 21-5/8 in |
| Weight (lbs) | 52.7 |

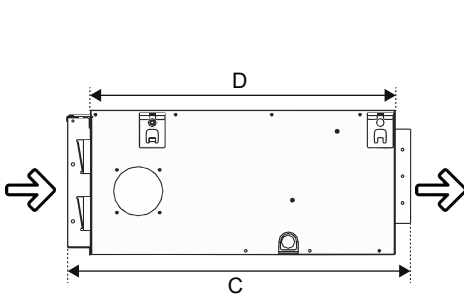
RT009GLSILCFHG Air Handler Dimensional Data



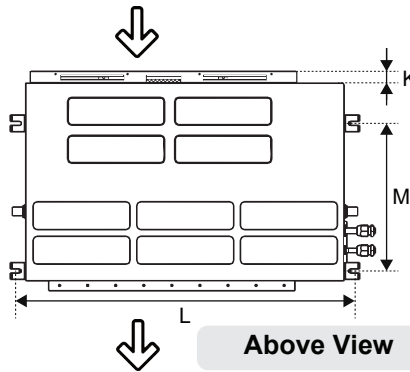
Supply Side



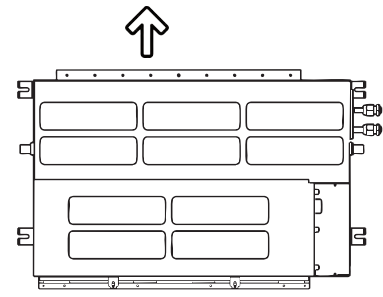
Inlet Side



Side View

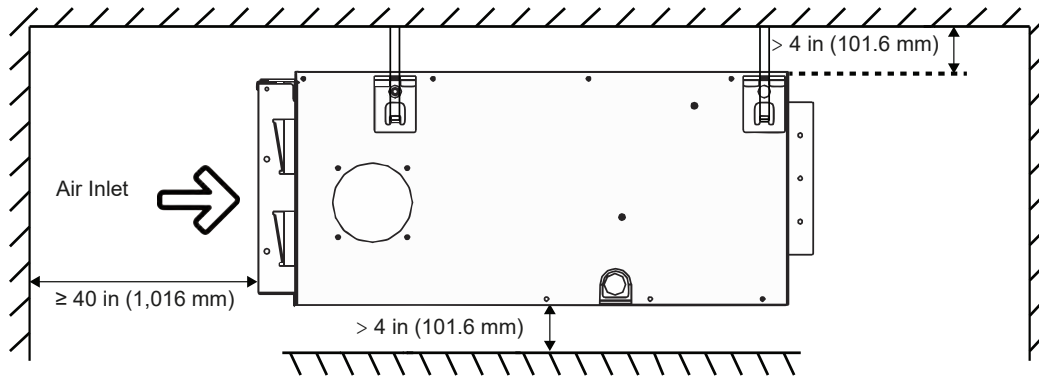


Above View

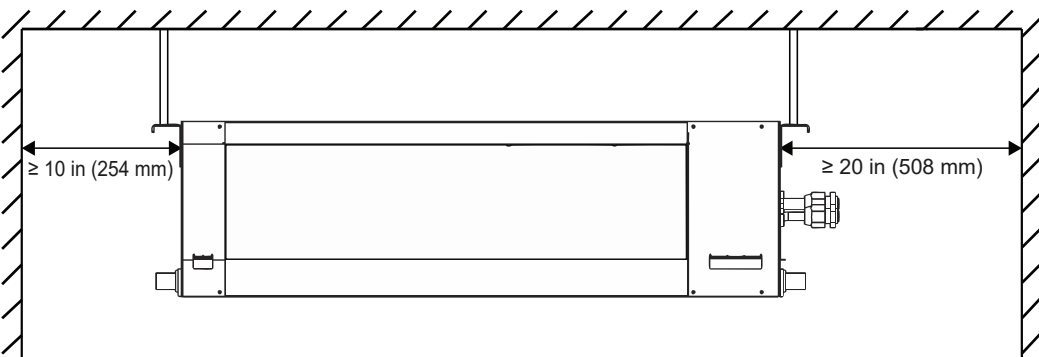


Below View

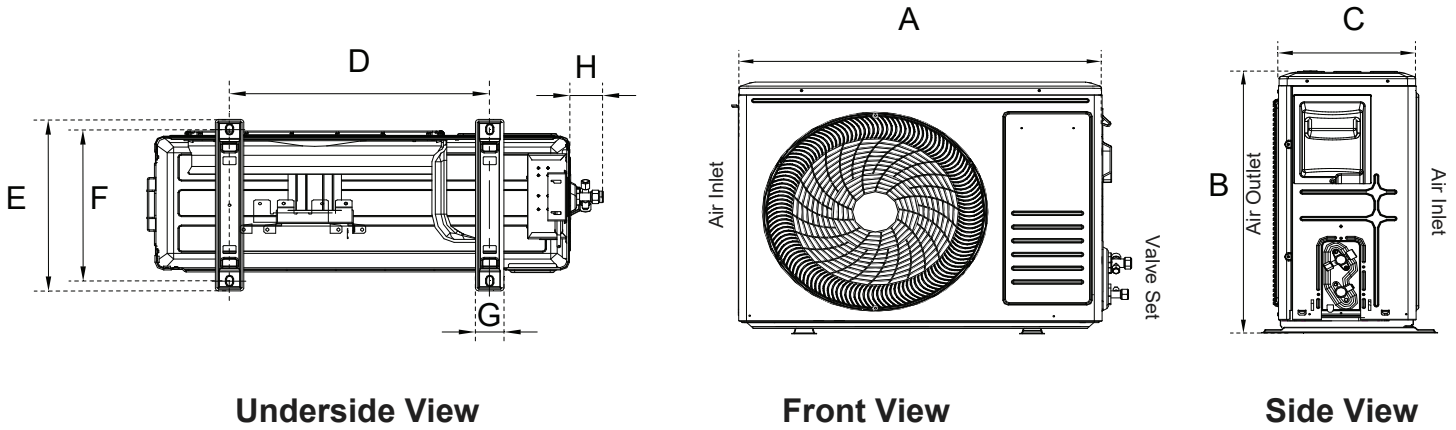
| Overall Air Handler Dimensions | | | | Front Side Air Outlet (Supply) | | | | Rear Side Air Inlet (Return) | | | Mounting Brackets | |
|--------------------------------|----------|-----------|-----------|--------------------------------|-----------|--------|----------|------------------------------|----------|----------|-------------------|-----------|
| A | B | C | D | E | F | G | H | I | J | K | L | M |
| 27-5/8 in | 7-7/8 in | 19-3/8 in | 17-3/4 in | 1-3/4 in | 20-1/8 in | 1/8 in | 5-1/2 in | 23-5/8 in | 7-3/8 in | 1-3/8 in | 29-1/8 in | 11-3/4 in |
| 701.7 mm | 200 mm | 492.1 mm | 450.9 mm | 44.5 mm | 511.2 mm | 3.2 mm | 139.7 mm | 600.1 mm | 187.3 mm | 34.9 mm | 739.8 mm | 298.5 mm |



Side View



Front View



| Model | A | B | C | D | E | F | G | H |
|----------------|-----------|-----------|--------|-----------|----------|-----------|----------|----------|
| YN009GLSI24RPG | 29-1/8 in | 21-3/4 in | 10 in | 17-1/8 in | 12 in | 11-1/4 in | 1-7/8 in | 2-1/4 in |
| | 741 mm | 551 mm | 253 mm | 434 mm | 304.8 mm | 285 mm | 48 mm | 58 mm |

Warranty Information and Length



Complete warranty details are available with the vendor or online at <https://www.pdhvac.com/support/warranty/>. This high quality system is eligible for up to 10 years limited warranty on the compressor, and 7 years on other internal parts. To qualify for this warranty, the system must be installed within 90 days by a registered technician. All other installations that are registered default to 5 years parts/compressor. Products unregistered qualify for only 1 year parts/compressor warranty.

Outstanding Features

- LED Display
- Energy Saving
- Ultra-Thin Design
- Dual Drain Options
- Customizable Timer
- Eco-Friendly Refrigerant
- Whisper-Quiet Operation
- Power Loss Memory Recovery



Available Accessories

| Part Number | Description |
|------------------|--|
| IKT-LCVR4P-KIT | <i>Decorative PVC Line Cover Kit</i> |
| IKT-LNBR-1/4-3/8 | <i>BendAid Flexible Easy Bender Kit</i> |
| BRK-FRM-C-2P | <i>Folding Mounting Bracket w/ Leveler</i> |
| IKT-UVL32UL-AG | <i>UVC Bacterial Disinfection Kit</i> |
| IKT-SURPRK-DV2 | <i>Ultimate Surge and Power Protection</i> |