

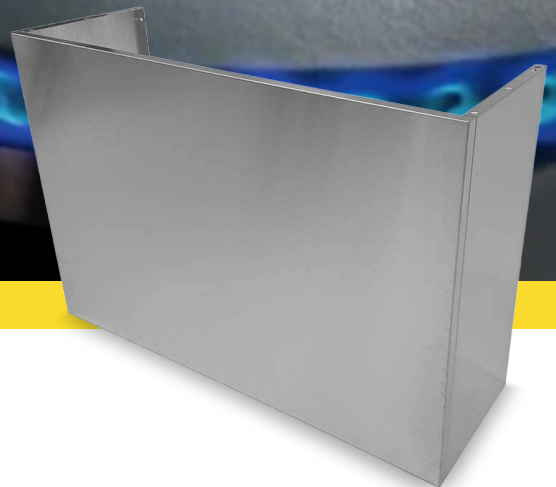


**THOR**  
K I T C H E N<sup>®</sup>

# INSTALLATION INSTRUCTIONS

---

**TUCH 24 INCH HEIGHT DUCT COVER**  
RHDC36TU24 / RHDC48TU24



## TABLE OF CONTENTS

---

LIST OF MATERIALS .....	4
SPECIFICATION .....	5
INSTALLATION PROCEDURES .....	6
MAINTENANCE .....	7

# LIST OF MATERIALS

---

**MODELS:** RHDC36TU24, RHDC48TU24

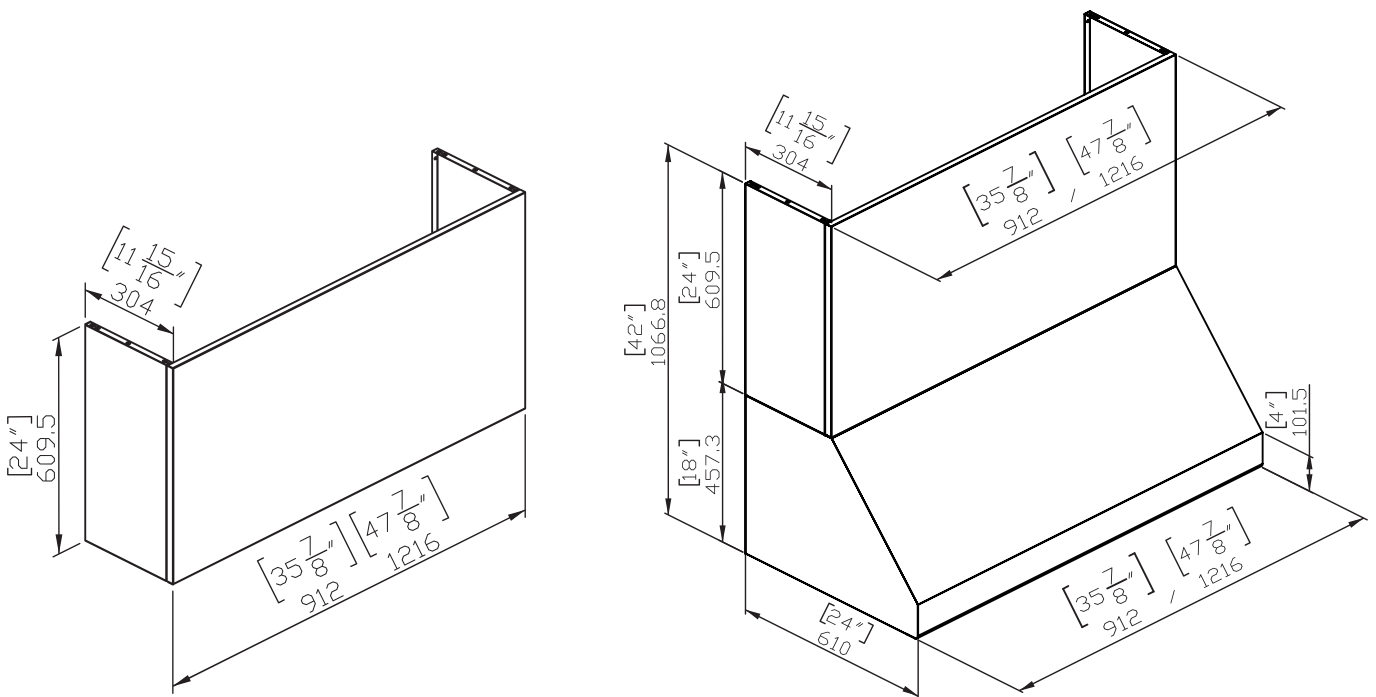
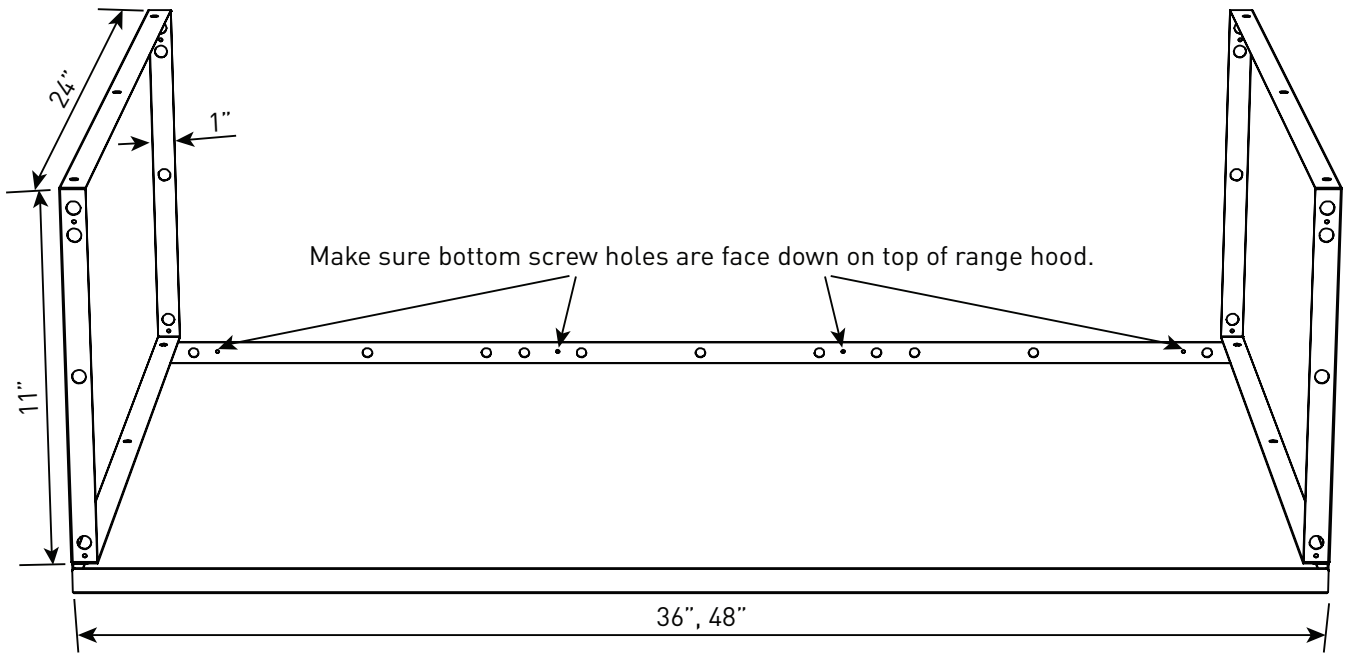
PARTS SUPPLIED	QUANTITY
Center panel	1
Side panels	2
Philips head metal screws	14

# SPECIFICATION

## COMPATIBILITY

TUCH3618, TUCH4818

## Dimension



# INSTALLATION PROCEDURES

---

1. Align the screw holes and attach the left and right side panels to the center using the provided screws (FIG. A).

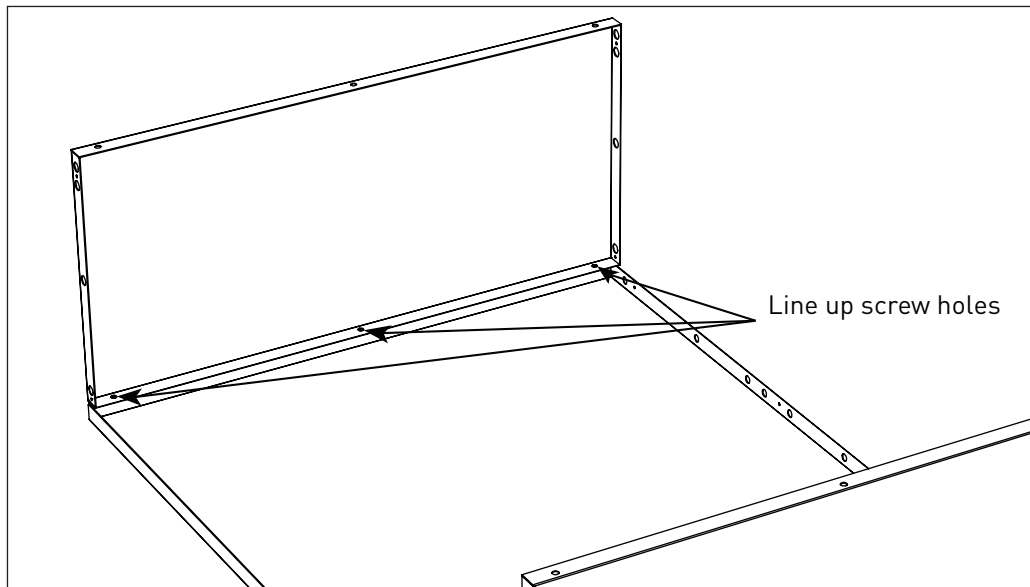


FIG. A

2. Place the assembled duct cover on top of the hood, ensuring screw holes of the center panel are facing down and aligned with the holes on top of the hood.
3. Secure the duct cover to the top by fastening the remaining screws to it from within the inside of the hood (FIG. B).

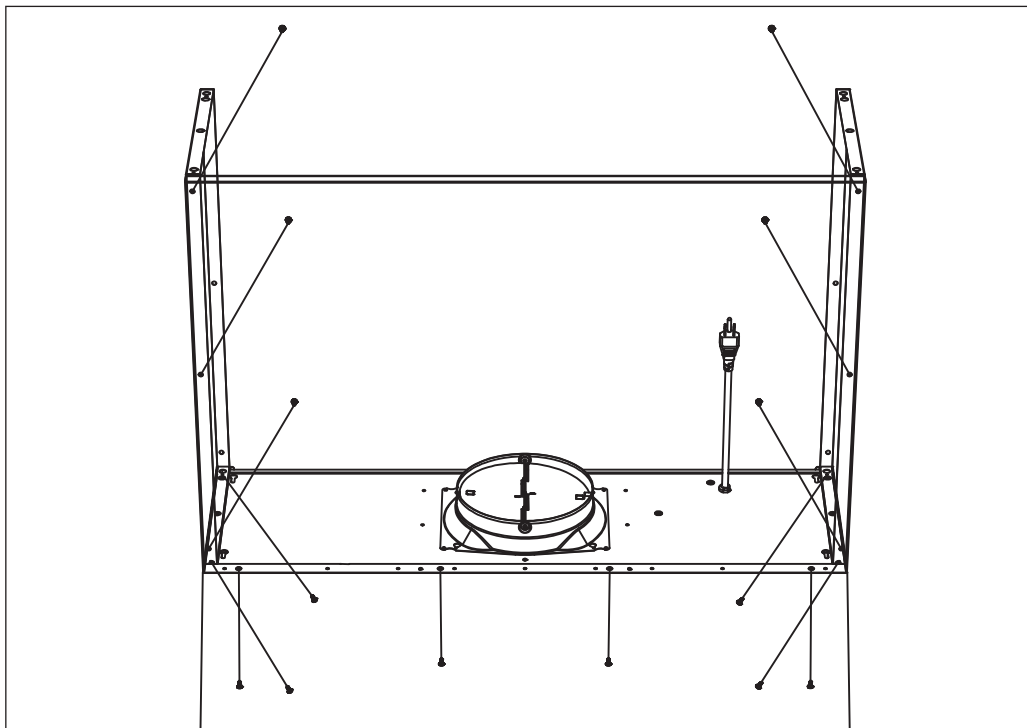


FIG. B

## MAINTENANCE

---

- To preserve the appearance and durability of the stainless steel, it is essential to clean the duct cover regularly. Cleaning should typically be performed once or twice a month, depending on your cooking habits.
- When cleaning, always use a non-abrasive cleaner suitable for stainless steel. Avoid using citrus-based cleaners (often labeled as "orange cleaners"), as they can damage the surface and cause discoloration. Additionally, do not use abrasive or ammonia-based cleaners, as they may scratch or discolor the stainless steel. Use a soft cloth or microfiber towel to wipe the surface, and ensure it is thoroughly dried to prevent water spots.
- You may also use stainless steel polish to restore the shine and enhance the appearance of the duct cover. When polishing, ensure that you follow the natural grain of the stainless steel to prevent streaks and achieve a smooth, even finish. Take care not to use excessive polish, as over-application can leave residue or cause discoloration. Always test the polish on a small, inconspicuous area first to ensure compatibility with the surface.

# We Stand Behind the Quality of Our Appliances.



Reliability and customer satisfaction are our top priorities. We offer a solid two-year warranty on both parts and labor. Enjoy professional-grade performance with the confidence that we've got you covered.

## Warranty Registration Made Easy.

**01** Scan the QR Code or visit [thorkitchen.com/register-your-product](https://thorkitchen.com/register-your-product).

**02** Input your purchase and product information and select register.

**03** That's it. You're all set. Enjoy!

Questions: [service@thorinternational.com](mailto:service@thorinternational.com)



WARRANTY



PARTS

