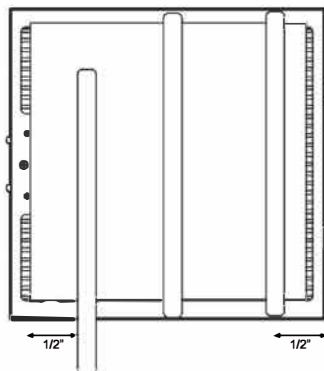
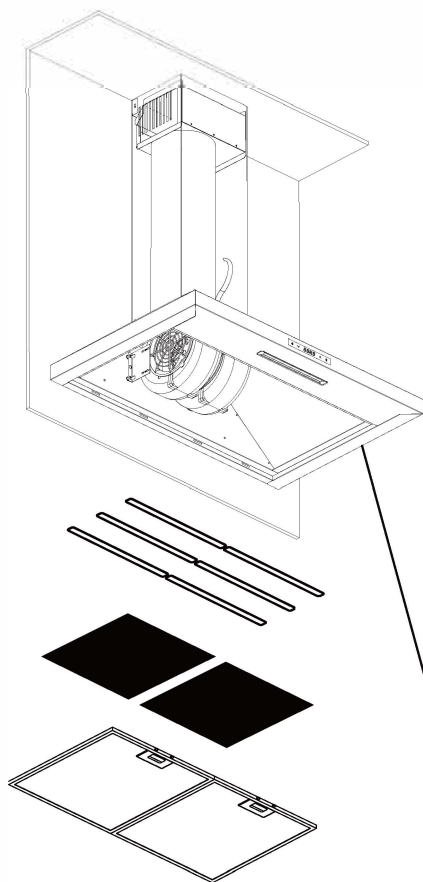


## ARC3001P, ARC3601P

For use with models: ARH30P and ARH36P

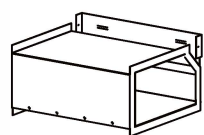


**Note:** Install the filter brackets at least 1/2" away from the filter frame.

Place charcoal filter on back-side of mesh filter. And place filter brackets over charcoal filter and secure in place by tucking each end of bracket under the mesh filter frame. Re-install mesh filter.

Remove all black foam from filter opening before installing the charcoal filter brackets.

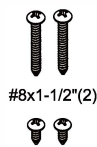
### INCLUDED MATERIALS



Plenum (1)



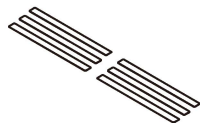
Pipe (1)



#8x1-1/2" (2)



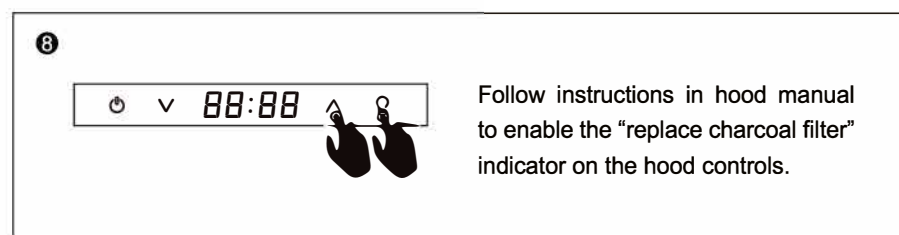
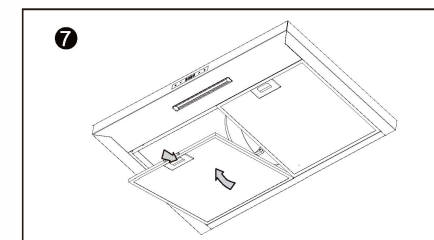
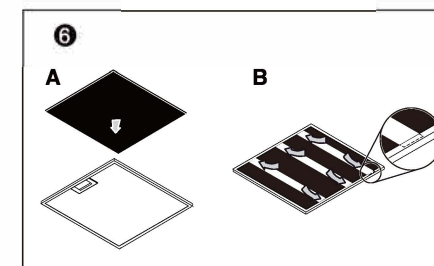
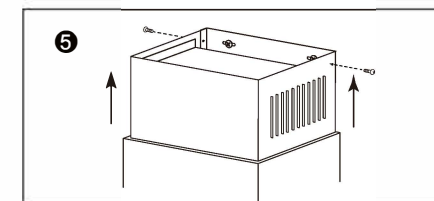
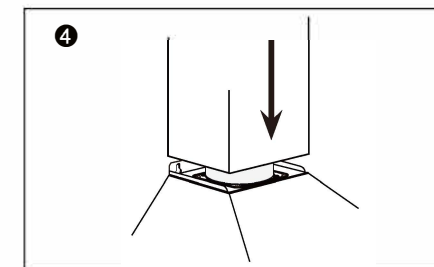
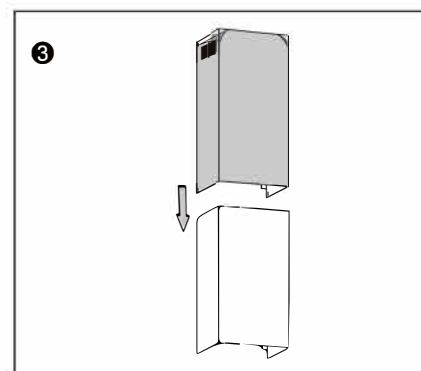
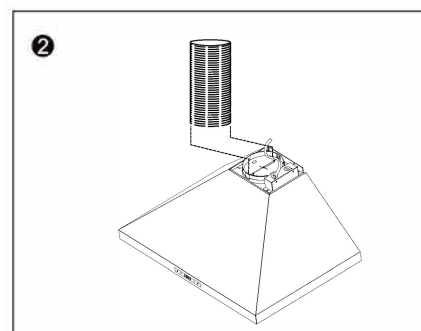
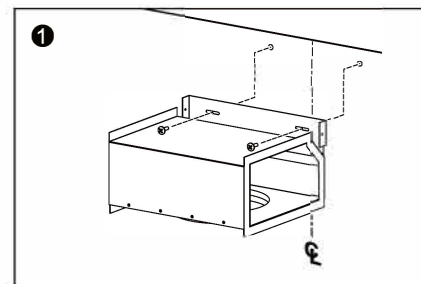
M4x12 (2)



Brackets (6)



Charcoal filter (2)



Follow instructions in hood manual to enable the "replace charcoal filter" indicator on the hood controls.